

Cancer 2018 edition:

Solstice Sentiments

Joy Usher's 'Tiny Universe'

Should I do the course?, a horary with
Joel Valentine

From the President

Living by the beach has its drawbacks. We feel the brunt of the storms and our gardens are lashed by salt winds from all directions. But that's about it. The positives are many – dipping toes in the waves, sea breezes in summer, watching rain approach over the sea, a front seat for lightning shows. Silver summer nights, fresh fish caught off the beach, a sense of endless space. And being aware of experiencing the annual cycle of the sun.

As I write this, it is the winter solstice. The sun is low in the sky, beaming rays through my northern windows. Tonight it will set at its northernmost point. Solstice means 'sun stands still' and it will indeed appear to stand still at that point before it slowly begins its trek southwards. We are witness to this. Tonight is the earliest sunset of the year – the beginning of the longest night.

In the southern hemisphere, the solstice heralds the beginning of Cancer. Our imagery is quite different from that of the northern summer. Here we have the image of the fire in the hearth; Cancer, the nurturer and protector of the family. The fire must be kept alive for the family to survive – this is the Cardinal nature of cancer, the urgency, the need to look after the tribe. This season evokes desire for warm, nourishing foods and gathering by the fire. The home is emphasised as a place of safety from the darkness and the cold. This is the month of Cancer in Australia.

It is the longest night, but the seed of light is sown and from now on the days will get longer. We can examine what that seed is for us individually. Darkness is the dream time, bringing the opportunity for reflection, for nurturing new ideas and seeing new possibilities. We open ourselves to growth when we allow ourselves to embrace the quiet, inner energy of the season. We need to confront our fear of death, darkness and change and allow the light of inspiration to grow within us as the light increases.

Our next meeting is a workshop by Mari Garcia on the nature of addiction and obsession, and the role of Pluto in the natal chart. Truly a transforming opportunity for us all at this dark time of year. You can book by emailing treasurer@faasa.com.au, and pay by bank transfer – details on our website – or by cash at the door. I hope to see you there.

May peace and plenty bless your world

Cate Whelan



2018 FAA SA Program

July 14, 10 am - **Workshop:** Addiction - Mari Garcia

August 11, 2 pm - All the Pain Money can Buy: The life of Christina Onassis - Anne Fryer, Elaine Kane

September 8, 10 am - **Workshop:** Ancient Moon Cycles - Kerry Galea (Vic)

October 13, 2 pm - AGM + Transits to Angles - Miriam Laister

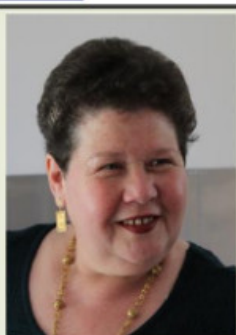
November 10, 2 pm - Sedna - Alan Clay (NZ)

November 18, 10am - **Workshop:** Progressions in Relationships - Paul Westran (WA)

November 24, 2pm - **Christmas Party**



FAASA workshop: Saturday July 14, 10 am—4 pm



Mari Garcia is a consulting astrologer, writer and educator. She completed formal astrological studies with Astro Logos and received the Practitioner's Certificate from the FAA in 1995 and was awarded the Alan Johnson Gold Medal. She studied Medieval Astrology with Robert Zoller and has lectured at the FAA bi-annual conferences, at UAC and on-line at the International Breaking Down the Borders Conference.

Mari's published work includes *Scala Coeli: A Ladder to Heaven* – A Collection of Astrological Essays, *An Ancient Art in the Modern World*, *Australis 97* Congress papers, *The Book of Notable Births*, *Astro Mundi Astrology Primers*, and the *Traditional Astrology Glossary of Terms*. She writes regularly for local, national and international publications. Her interests include mundane and political astrology, mythology and traditional astrology and the research and application of traditional techniques in a modern setting. She runs a consulting practice and is co-principal of ASTRO MUNDI. For more information visit www.astromundi.com

Workshop: Archetypes and Addictions *Mari Garcia*

The notion of addictions is not confined to substances but can also be applied to addictive behaviour patterns. Individuals can be engulfed by obsessions, which can be detrimental. Uncovering and understanding the underlying archetype in these behaviours can be a powerful tonic. This workshop will explore Pluto's influence with the personal planets as a signature of obsession and addiction in the individual. We will also focus on the key issues underpinning these combinations and the possible ways in which they can be realised, released and integrated.

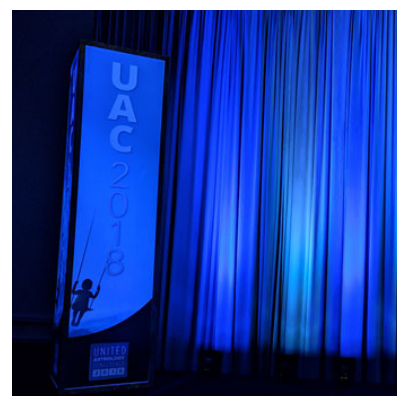
Saturday July 14th, 10 am – 4 pm, TS Rooms behind New Dimensions Bookshop, 310 South Tce Adelaide

Members \$70, Concession members \$60, Non-members \$90

Pay by cash at the door, or by EFT with email to treasurer@faasa.com.au
ANZ, BSB 015 367, Acct no 499070824, Acct name FAASA Inc
Bookings: treasurer@faasa.com.au or phone Cate on 8557 7417

UAC has finished, want to hear all about it?

The Astrology Podcast did a special edition to debrief about the world-class conference. Listen to it [here](#).



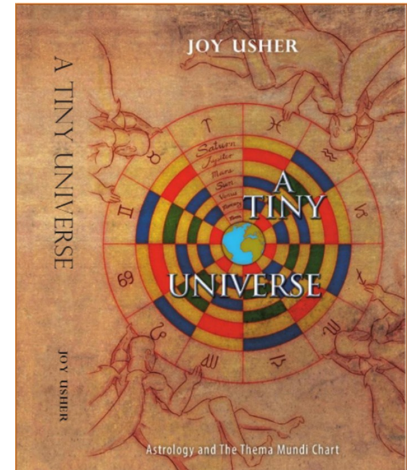


Prime Minister's baby

Curious about the natal chart for Jacinda Ardern's first child? So are we! Neve is only the second ever child born to a sitting female head of state. The Guardian published the birth details as 4:45pm in Auckland. [To see the chart, click here.](#)

Excerpts from 'A Tiny Universe' - a new text on ancient ideas

Joy Usher



'A Tiny Universe' is the title of one of two new astrological texts released by Joy Usher. The texts represent the culmination of extensive research into ancient astrological teachings, as well as years of client-centered practice and astrological education.

Joy has agreed to publish excerpts from both texts in the Southern Star. For more information, and to purchase your copies today, [head to Xlibris publishing.](#)

The Chaldean Order of the Planets (Excerpt from 'A Tiny Universe', Chapter Two)

"The nitrogen in our DNA, the calcium in our teeth, the iron in our blood, the carbon in our apple pies were made in the interiors of collapsing stars. We are made of star-stuff." - Carl Sagan, Cosmos

The term 'tiny universe' seems to be somewhat of an oxymoron. Universes are huge not tiny, but astrophysicists agree that our link to the greater Universe is physical and that our bodies actually do contain "star-stuff". Without knowledge of this scientific fact, the ancients made the link far more substantial and real by reinforcing the philosophical and spiritual tie between the heavens and the physical world.

They believed that each person was made in the image of the universe using the same elemental materials of fire, air, water and earth, and humans were a reflection of the planets' energies and their essence.

Humans may be tiny in comparison to the heavens but the connection between the macrocosm and the microcosm was believed to be strong and irrefutable and astrology was the bridge which bound each small

universe to the greater cosmos.

The Ages of Man (Excerpt from: p.20 -26)

The Moon to Venus – Birth and Childhood

"Today you are you! That is truer than true! There is no one alive who is you-er than you!" Happy Birthday to You! By Dr Seuss - Theodor Seuss Geisel (1904-1991)

Echoing the symbiotic relationship between macrocosm and microcosm, Claudius Ptolemy employs the Chaldean sequence of planets in reverse order to describe the progression of different psychological stages in human life, beginning at the Moon and finishing with Saturn.

These planetary periods are known as the Ages of Man.

They are divisions of time which demonstrate a particular focus or experience unique to the nature of a planet, and although the allotted time for each planet is generic in number, the quality and magnitude of the period differs according to the condition of the ruling planet in the native's chart.

Life begins with the Moon symbolising the first Age of Man from birth to four years of age as the human condition in infancy best reflects her own nature. According to Ptolemy, the Moon's period describes the first four years of life when reason and the mind are not fully developed.

This leaves room for the Moon's emotional qualities to dominate the infant's reactions to external stimuli, and the Moon's instinctive drive toward survival to override conscious development of the intellect during this earliest period.

The Sun's reflected light on the Moon is symbolic of a constant strengthening in the baby's life-force as its own diminutive universe is learning to react by instinct and to acclimatize itself to the enormity of the world which surrounds it.

The child's first years bring rapid change so that it can adapt to an expanding physical environment, and in order for this to happen, the infant requires constant liquid nourishment and temperate living conditions, or at least, protection in extreme climates. This suits the nature of the Moon perfectly, especially when moisture and coolness, or a reduction in heat, are qualities best suited to the night-time rather than the day, and therefore are the Moon's own intrinsic qualities.

After the age of four the Moon releases the child into the care of Mercury in correspondence with the Chaldean Order, and the planet second from the Earth takes command for a period of ten years, lending its own qualities to the development of mind and character through *"imbibing the seeds of learning, and developing, as it were, the elements and germs of the genius and abilities, and their peculiar quality."*^[1]

For a decade, Mercury assists with education, focuses on instruction and feeds the desire for knowledge in the ages between four and fourteen. During Mercury's period the child is given the opportunity to learn to reason within their own unique framework, and to carry Mercury's seeds for individuation into the future, as personality evolves and other planets get ready to take charge of life.

"Give me the child until the age of seven and I will show you the man", is a quote attributed to Ignatius Loyola, the founder of the Jesuit order in 1540, which refers to the belief that a child's spiritual and moral indoctrination during the early years will remain with them throughout life.

The assumption that the adult's temperament, moral choices and religious affiliations can be moulded in the first seven years of life is not unique to the Jesuits, and in some ways the Ages of Man reflect a similar sentiment when Mercury rules four of the years before the child reaches their eighth birthday.

In a chapter entitled Quality of the Soul in Book Three of *Tetrabiblos*, Ptolemy states that Mercury, and its condition in the chart, is responsible not only for the quality of the mind, but also for the rational and spirited part of the soul, whilst the Moon provides indications as to the sensory and appetitive part of the soul.

If the first seven years of life are under the jurisdiction of the Moon and Mercury, then the Jesuit phrase has some merit, and the combination of these two planetary periods can create an imprint on the man because of their impact on his childhood experiences. Both planets are highly susceptible to pressure from other planets, and later authors such as Guido Bonatti (c.1282 CE) note that the Moon signifies the 'quality of the soul' (Ptolemy uses this term as well) according to her commixture with the planets, because if she is joined with a good planet, the native's quality of soul will be good, but if she is with an evil planet, the quality of soul is affected by its maleficence.

Likewise, Mercury naturally signifies the infirmities of the soul such as *"the arrogant (person) belittling great matters, or the timid magnifying little ones, and horrible thoughts, the unquietness of the mind and doubt, such that the native seems out of his mind and similar things."*^[ii]

Akin to the Moon's signification, Bonatti states that if the planet with which Mercury is joined is well-disposed he signifies a good quality of soul, and if he is badly disposed, he signifies an evil quality of soul.

Ptolemy warns of being hasty in making rash judgements concerning the soul and says that arriving at an opinion of the soul's quality is a complicated task and a thorough investigation of all factors must be made, as *"the mind is liable to impulse in a multiplicity of directions"*^[iii].

However, Ptolemy did believe it to be possible to glean clues on the quality of the soul as his text is detailed in explaining the differences between the signs of Mercury and the Moon, their dispositors (the owner of the sign), and the other planets who dominate them, as each factor contributes much to the character of the soul.

Several centuries after Ptolemy, Johannes Schoener (1477-1547) remarked that a child's susceptible nature during Mercury's period was reflected by the planet itself as Mercury can mimic another planet's qualities, and

will take on their nature if found under a planet's influence.

For instance, if Mercury connects with a planet of a hot and dry nature, then the other planet will stimulate the tongue and speech of the native and sharpen the child's reason and intellect, and they will become keen for the discipline of learning.

Schoener adds that if Mercury should be well disposed in a revolution (solar return) during its ten year period, this will be an excellent year for education, and the child will have a greater propensity for learning.^[iv]

The third Age of Man belongs to Venus whose eight years of government corresponds with her astronomical cycle covering the same period of time. Once Mercury and the Moon have played their role in developing the mind, soul and character of the native, the reproductive nature of Venus encourages love, sex and procreation during this particular Age which lasts from fourteen years to twenty two years of age.

Ptolemy says that *"from Venus the movement of the seminal vessels originates, as well as an unrestrained impetuosity and precipitancy in amours"*^[v] which is Ptolemy's way of saying: Beware the raging hormones of pubescent teenagers!

Venus still plays an active part in the teenage years today, as adolescents begin to develop intense social and sexual relationships during this third Age, often connecting through social media and cyber-space. The focus on Venus from fourteen to twenty two years of age may have differed in the 15th century, but Schoener's text indicates that not much has changed when it comes to love: *"If at that time Venus is the lady of a year (solar return ruler), the native will become most fervent in love; he will enjoy scented substances, beautiful ornaments, music, entertainments with lutes, hunts, fowling and similar things which delight the soul."*^[vi]

The next Southern Star will cover the remaining 'Ages of Man' as another excerpt from Joy Usher's recently published text 'A Tiny Universe'.

Joy Usher is an Australian astrologer who has been consulting, teaching and lecturing in astrology for the past 25 years. She has studied traditional techniques in astrology since the early 1990s and has incorporated traditional methods in the consulting room and the classroom since 2002. Joy Usher is co-principle of the astrological school Astro Mundi which has been operating in Adelaide since 2002. For more information about Joy's recently published texts, [head to Xlibris publishing](#).

[i] Claudius Ptolemy, *Tetrabiblos or Four Books of the Influence of the Stars*, trans. J.M. Ashmand. 1822, Ballantrae Reprint, Ontario, Canada, Book IV, Chap 10, p. 138

[ii] Bonatti, Ch 65, p. 122

[iii] Ptolemy, Book, III, Ch. 13, p. 107. Also available online courtesy of <http://www.classicalastrologer.com/>, Forward by Prof. Peter J. Clark, Victoria, British Columbia, Feb 2006, p. 86

[iv] Johannes Schoener, *Opus Astrologicum*, Trans. Robert Hand, Project Hindsight, Latin Track, Volume IV, addendum by Robert Hand, Conference on Cos, 25/4/1996. Part I – The Seven Ages of Man – Schoener – Concerning the General Governors of the Seven Ages

[v] Ptolemy, p. 138

[vi] Schoener, p. 1



Horary: Should I do the course?

Joel Valentine

I recently had a querent who was interested in doing some study, but was having some issues in finding the right fit. One course was appealing, but it clashed with some other commitments. The querent wanted to know if they would do the course, and if it would be a positive experience.

Should I do the course?

Natal - Chart

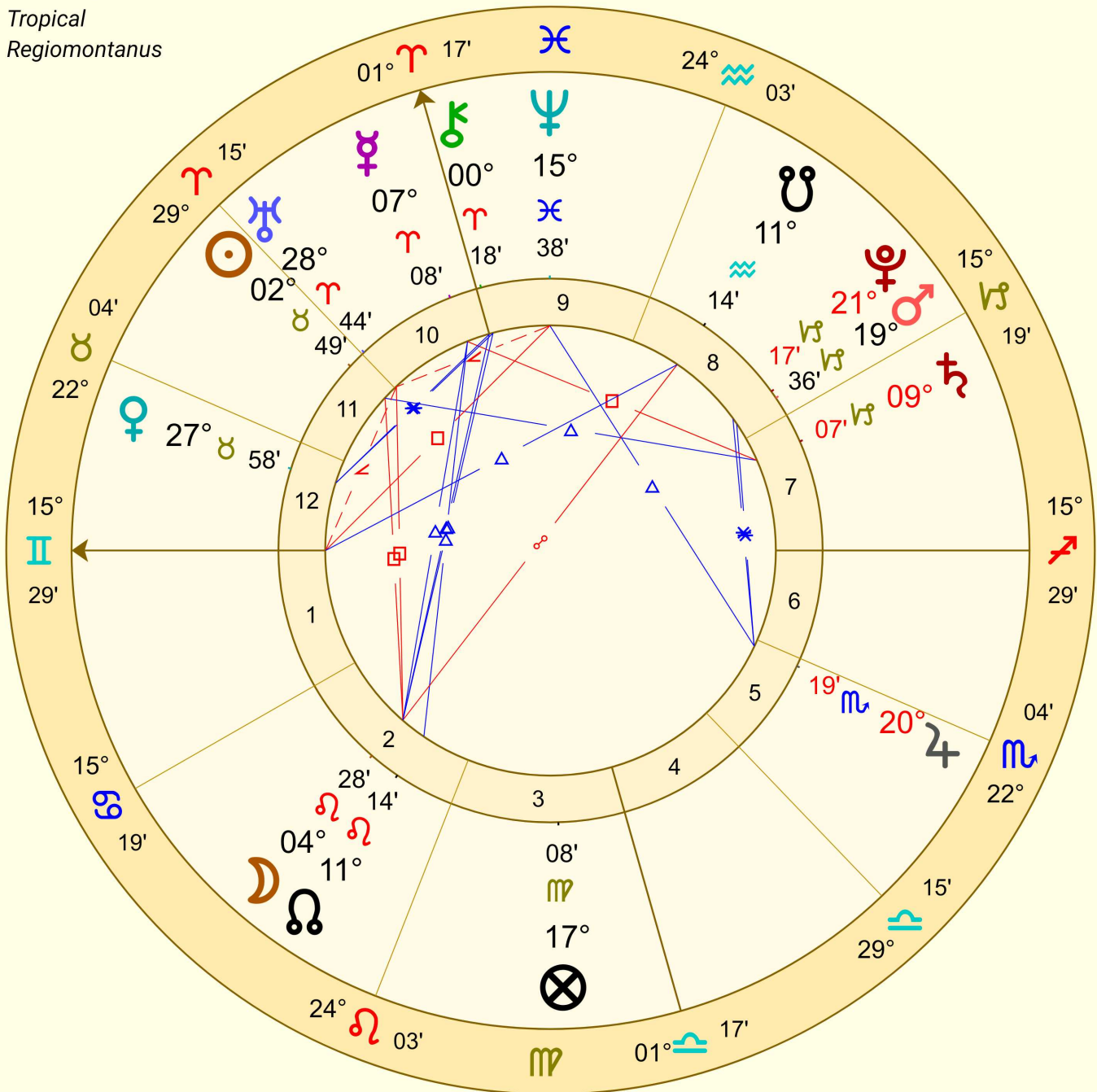
23 Apr 2018, Mon

10:16:18 ACST -9:30

Adelaide, Australia

Tropical

Regiomontanus



The querent is Ascendant ruler Mercury in the sign of Aries. Recently having gone direct, this could indicate that the study is something the querent has considered before and that they are now ready to move forward with it. Mercury is in the 10th house, indicating that the querent is interested in career matters, and the ways in which

the course and options at hand will play into that. Mercury is also in the sign of Aries; plenty of fire to begin the venture, but not always a sign of longevity. It can also be a sign of hot headedness. Mercury itself has a thirst for knowledge, but can be a little erratic and distracted. Some of this is re-emphasised when placed in the sign of Aries.

Higher learning is ruled by the 9th house, and ruling that house is Saturn. When Saturn and Mercury play well together they can bring structure and authority to communication and learning, but in this chart they are telling another story. Saturn is in very strong in its own sign of Capricorn and has much more 'dignity' than Mercury. Dignity is a term used to describe the power a planet has in order to achieve what it sets out to. Saturn is powerful, but in retrograde motion. At this point in its cycle it is almost stationary. The significations of this indicate that the course has much more power than Mercury, may call the shots, and as it is Saturn in the sign of Capricorn it may be a bit of a 'stick in the mud'.

We can see that Mercury and Saturn are mutually applying to square each other (a difficult aspect). Aspects indicate that action is going to take place. If there were no aspect, we might assume the querent would just give up on the course, or the course wouldn't even consider the querent. The square indicates something will happen. Mercury in Aries, though, is in the sign of Saturn's 'Fall': the course doesn't think very highly of the querent, or this isn't a relationship that is going to 'gel'.

The astrology reflects the situation: the querent said that they were keen and impatient to start the course (Mercury in Aries), but they hadn't heard back from the course coordinator until recently because the school was on holiday break (Saturn Retrograde). The querent was interested in the course, but was waiting to hear if some of their unusual requirements could be met to fit in with their other commitments. According to the astrology, I suggested that Saturn in Capricorn was probably unlikely to give much wiggle room or make many concessions.

Some hours later the querent said that this was the case. While the coordinator had finally gotten back to the potential student and offered some alternatives, they would still need to make a number of sacrifices and back-bends in order to complete the course (Saturn's demands are often quite rigid!) While the querent was disappointed, I indicated that there was some positivity in the Moon applying to trine Mercury and conjoin the North Node (generally a positive or auspicious point in a horary chart). What new information was coming in?

As both Mercury and Saturn are in Cardinal signs, I thought the matter would be resolved pretty quickly. Saturn's square and the exact square from confusing Neptune to the ascendant of the chart indicated that all might not be well (or easy), but the Moon's positive aspect and the Sun's position in the house of 'allies, hopes, and wishes' indicated to me that there might be more information to come.

Around 7pm the same night that the cast was chart, the querent received an email from the coordinator with a final offer. By this time though, the querent had found another course that fit their schedule and around their other commitments (Mercury in Aries may not always do thorough research). At this time, the Moon and North Node were culminating at the top of the sky, reflecting the other option that was going to present itself, as

indicated by the Moon's positive aspect.

Southern Star

Editor: Joel Valentine
Email: editor@faasa.com.au
Phone: 0429 231 390
Internet: www.faasa.com.au

Submissions: All articles and advertisements are to be submitted in word format (preferred) to the Editor via email by the 12th day of each month.

Disclaimer: The Editor reserves the right to edit or refuse submissions to the newsletter. The opinions expressed herein do not necessarily reflect the opinion of the Federation of Australian Astrologers or the Southern Star Editor

© Southern Star, FAA SA Inc 2017. All rights reserved.

FAASA Membership Fees

(per calendar year)
Full – \$80
Concession* – \$60
Joint Full – \$115
Joint Concession* – \$85
Newsletter Only – \$40

*Concession cards need to be sighted by the Treasurer when paying membership subs. Only pension cards and healthcare cards issued by Centrelink are deemed Concession.

FAASA Committee

President
Cate Whelan
08 8557 7417
president@faasa.com.au

Vice President
Kris Svendsen
0424 682302
vicepresident@faasa.com.au

Treasurer
Judy Best
0415 781 280
treasurer@faasa.com.au

Secretary
Anna Kadow
secretary@faasa.com.au

National Councillors
Cate Whelan
08 8557 7417
president@faasa.com.au

Kris Svendsen
0424 682302
vicepresident@faasa.com.au

Members
Anne Hamilton
08 7524 2726
hamilton.a26@gmail.com

Joel Valentine
0429 231 390
joalybird@gmail.com

Bev Malin
08 8331 2118
bevmalin@internode.on.net

Adrienne Barkla
0408 241 250
adrienne.barkla@esotericstudies.net.au

Newsletter Editor
Joel Valentine
0429 231 390
editor@faasa.com.au

