



Aries 2018 edition:

South Australia's new leader, with Jill Amery

Plus a traditional analysis of the recent election

From the President

St Patrick's Day has gone, and it's the Autumn Equinox here in Australia. In the Celtic calendar it's the final season before Samhain. The Celtic yearly cycle corresponds energetically with our Secondary Progressed Lunar cycle, with 8 phases or seasons. However, their year ends and begins with Samhain, the time of letting go and preparation – effectively our Balsamic phase.

It's a different way of thinking, to begin a cycle as you move into the darkest time. The Autumn equinox would correspond with our Third Quarter Phase. There is decreasing daylight and loss of strength in the sun's energy. It is a time to assess the harvest of the cycle, and to give thanks for what has been accomplished. It is the energy of completion. It is a 'breathing out' time.

In the Southern hemisphere, of course, our seasons are the reverse of the Celtic seasons. For them, Samhain is the 1st of November, the time when the veil between the physical and non-physical world is thinnest. Our corresponding date is 1st May, when the days are really getting shorter and the weather colder as we head towards winter. So in this 45 days leading to our Balsamic season, it is time for looking back over the past year, for reflecting, and for preparing to move from the masculine energy of the warmer, lighter days to the feminine energy of darkness and retreat. As a society we have moved physically past the limitations of darkness, night and winter and by flicking a switch we can have endless light. The understandings of life that might emerge from inhabiting the darkness are not valued. Our world wants constant growth and endless summertime. We have lost our sense of balance and our ability to move

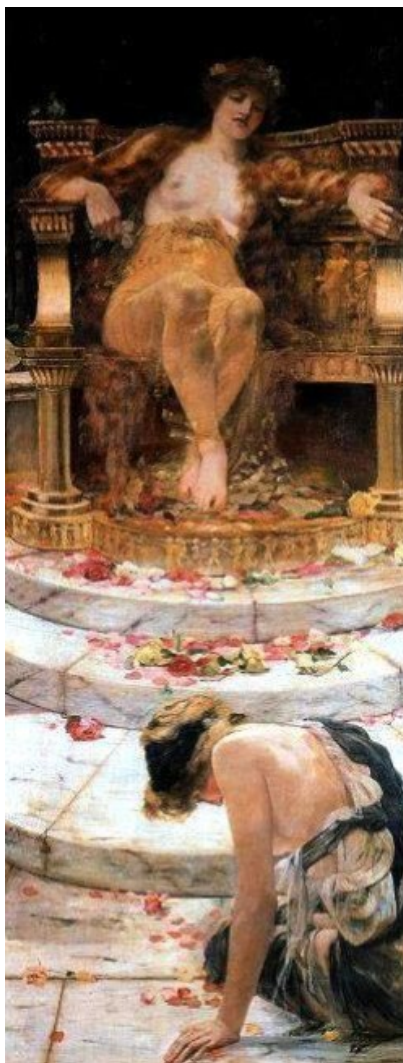
with the cycles of life. Time to reflect upon this too, as our nights begin to overshadow our days.

Thank you to Joel Valentine and Kris Svendsen for their accurate election predictions last meeting, and to Ann Collins who reminded us that financial matters also work in cycles.

We are very excited to have **Stephanie Johnson** back in Adelaide for our next meeting on **April 7. She will be exploring Astro-Mapping** and she has very generously provided a Solar Writer valued at \$295 as a door prize. Don't miss the opportunity!

May love and laughter light your days

Cate Whelan



2018 FAA SA Program

April 7, 2 pm - Around the World with Astro Mapping - Stephanie Johnson

May 12, 2pm - Soul-Centred Astrology: Beginning to read a chart esoterically - Adrienne Barkla

June 9, 2 pm - Countries in Crisis - Vivien Lowe, Mari Garcia, Jill Amery

July 14, 10 am - **Workshop:** Addiction - Mari Garcia

August 11, 2 pm All the Pain Money can Buy: The life of Christina Onassis - Anne Fryer, Elaine Kane

September 8, 10 am **Workshop:** Ancient Moon Cycles - Kerry Galea (Vic)

October 13, 2 pm - AGM + Transits to Angles - Miriam Laister

November 10, 2 pm - Sedna - Alan Clay (NZ)

Last Call!

Membership fees are well and truly due.
Come along to our next meeting to renew, or email out treasurer directly: treasurer@faasa.com.au.

Your membership keeps our wonderful club going, and it gives you exclusive access to the FAA Journal, this newsletter, and reduced cost attendance at meetings and workshops. Bargain!





FAASA Next Meeting: Saturday 7th April, 2 pm



Around the World with Astro-Mapping

In this month's lecture Stephanie Johnson will outline different techniques of Astro-Mapping including Astro*Cartography and Local Space, focusing mainly on the technique known as Astro*Cartography. What points are significant when travelling around the world? What is required when doing Astro*Mapping? What do you do when couples ask where they should live?

Stephanie Johnson is a professional astrologer with a passion for seeing clients, writing astrological text and creating quality astrology software. She was a journalist in Australia, England and the USA before becoming a professional astrologer. She is currently the sole director of Esoteric Technologies Pty Ltd, and one of the creators of Solar Fire and Astro Gold. Stephanie is based on the Mornington Peninsula in Victoria, Australia. She is a driving force in the creation of the Solar suite of software and runs her own international consultation business and astrology report writing service. You can find more information at www.seeingwithstars.net

WIN! STEPHANIE HAS DONATED A SOLAR WRITER, VALUE \$295, AS DOOR PRIZE!
To view the range, visit www.esotech.com.au

Saturday 7th April, 2 pm, TS Rooms behind New Dimensions Bookshop, 310 South Tce

Members \$10, conc members \$8, non-members \$14 Afternoon tea supplied

For more information email president@faasa.com.au or phone Cate on 8557 7417



STA 
SCHOOL OF **TRADITIONAL** ASTROLOGY

**HORARY
ASTROLOGY**

5-day intensive
Melbourne, Victoria
April 9 - 13, 2018
with Eve Dembowski

**MEDICAL
ASTROLOGY**

6-day intensive
Hepburn Springs, Victoria
April 21 - 27, 2018
with Lee Lehman, Ph.D.

enrol online at
<http://sta.co>
or email eve@sta.co



Steven Marshall's Lucky Stars

With Jilly Amery

Steven Marshall was born 21 January 1968, 5:43am, in Adelaide, South Australia. I asked him if he knew his birthtime at a Norwood Residents' Association meeting in 2015. He confirmed that he did, and immediately wrote the data on his business card and gave it to me. He told me that he's very open to astrology and was interested in its potential.

Steven Marshall

Natal Chart

Inner Wheel

21 Jan 1968, Sun

05:43 ACST -9:30

Adelaide, Australia

Tropical

Placidus

Transits

Natal Chart

Outer Wheel

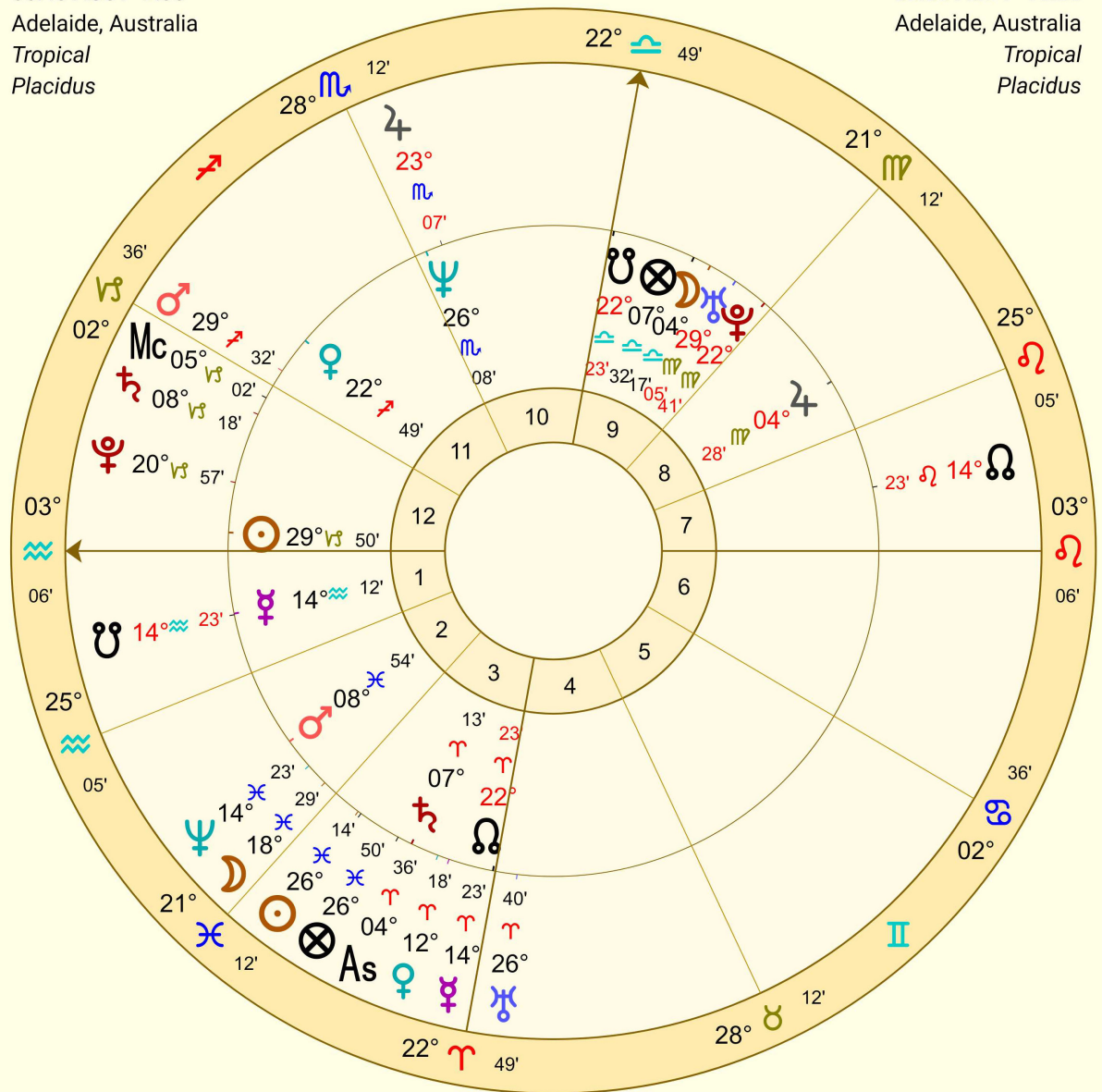
17 Mar 2018, Sat

08:00 ACDT -10:30

Adelaide, Australia

Tropical

Placidus



Transit Pluto (empowerment) applying closely by square (activating) aspect to his natal MC (career) at the election is, I feel, the most powerful signal of potential leadership success, together with transit Uranus applying to his natal Sun (major new circumstances) also by square aspect. Together in time, these two powerful outer planets present potential for major revolutionary change in one's life: "the attainment of great objectives by an immense application of effort, the bringing of new things into being" (Reinhold Ebertin). Noel Tyl says of Pluto to the

Midheaven: "extremely important time of life; dramatic changes of perspective are practically assured; identity transformation is possible; job adjustment is major; a life milestone".

The opportunities presented by these formidable outer planets are much enhanced if you are "up for it" and able to grasp those do-or-die opportunities with both hands, as Steven has done. Uranus-Pluto combined symbolism is about overturning the status quo and revolutionary change, as well as having strong elements of risk and danger – they are not for the faint-hearted.

There can be a "David and Goliath" symbolism about major Uranus-Pluto developments too – i.e. the little man winning over more (seemingly) powerful forces. Prior to becoming Liberal Party leader in SA, Steven had had no prior political experience, and a long struggle to get his feet under the desk in not only a highly challenging environment but as leader of a faction-riven party. In the beginning he was sneered at by his tougher political competitors but now he has won the premiership of SA he can feel his efforts are both rewarded and justified. And he has also managed to unite his party (his Moon in Libra in the political 9th house of his horoscope undoubtedly had a hand in that!).

Transit Uranus, after squaring his Sun, goes on to square his Ascendant and trine his Jupiter through 2019 - so being Premier could well give him a "pick me up" on the pzazz front. He could sparkle and feel more confident, through Uranus's energies. That's already becoming apparent, immediately after his election win.

In this election timeframe, he has midpoints by Solar Arc: SA Node = Jupiter/Pluto: "working together with others for success"; and SA MC = Jupiter/Pluto: "hard-working attainment of power position". SA/SP Sun is within orb of Jupiter/Saturn: "taking destiny into one's hands; major changes according to plan" (all Noel Tyl interpretations).

There are some serious midpoint pictures by transit and arc too though, which suggest some difficulty and anguish, but his beloved mother has been ill and hospitalised, causing him understandable anxiety.

The daily Moon is also useful to look at on election night. As Steven delivered his glowing victory speech at the Hackney Hotel, the Moon was at his political 9th-house Uranus-Pluto midpoint: "change through force, indomitable, emotional conviction"! (In fact the New Moon that evening was occurring at his 9th-house Uranus/Pluto midpoint!). And... the wonderful timer, the Secondary Progressed Moon, is not only about to conjunct his Descendant (public recognition) but was only 7 minutes past the Jupiter/Uranus midpoint at the election: "opportunity for major change, looking forward to success" (again, Tyl interpretations).

As astrologers we look for repeating planetary patterns that echo themes which assist us in forecasting. Continuing the Uranus-Pluto major theme of his election win, taking his party to victory after its 16 long years 'in the wilderness', as the press is fond of reminding us, Steven Marshall's Swearing-In as Premier (19th March 2018, 9:10am, Government House Adelaide, SA) features the duo prominently. Rising at the Ascendant is Uranus, squaring the MC, and Pluto is close to the MC squaring the Ascendant.

Steven Marshall

Natal Chart

Inner Wheel

21 Jan 1968, Sun

05:43 ACST -9:30

Adelaide, Australia

Tropical

Placidus

Swearing In

Natal Chart

Outer Wheel

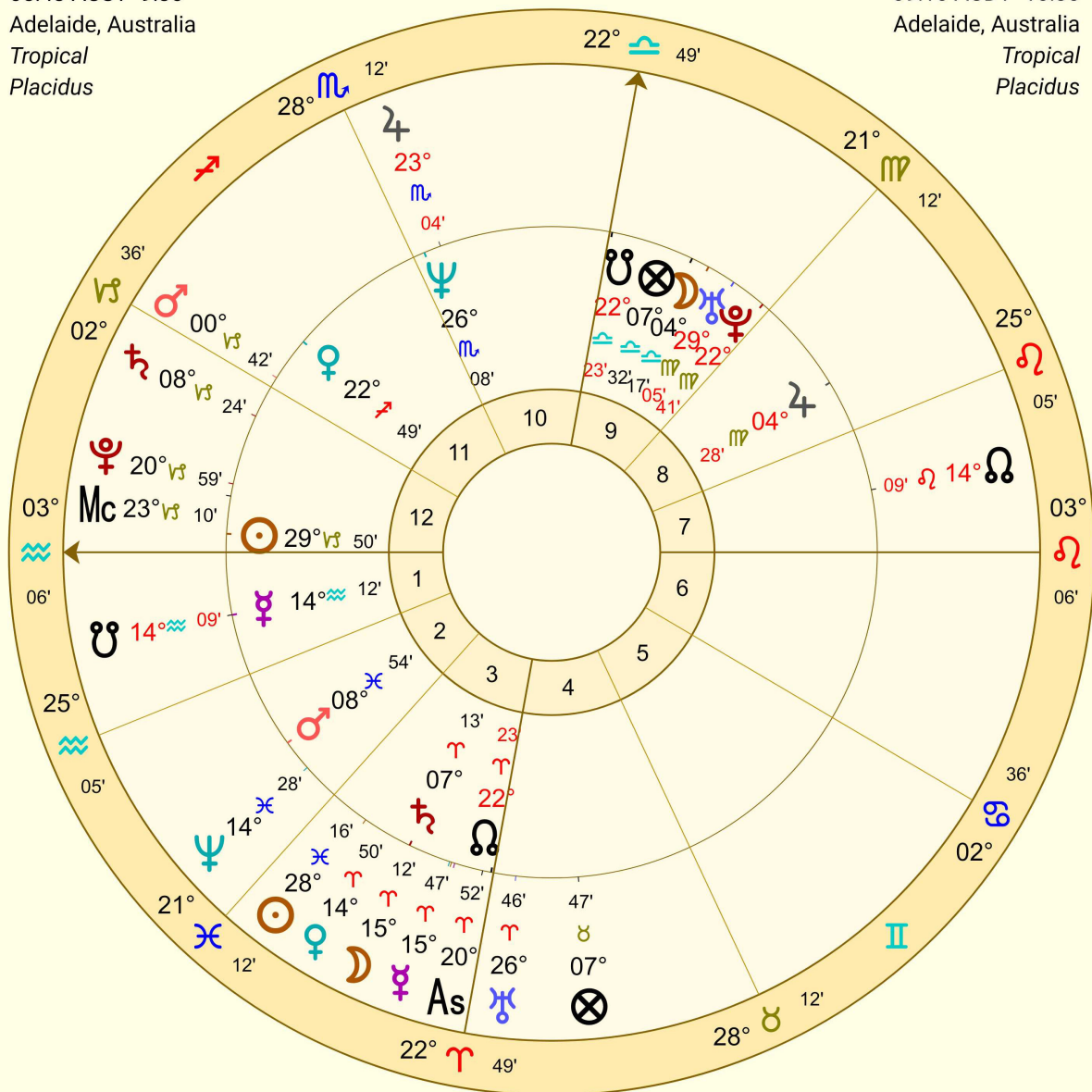
19 Mar 2018, Mon

09:10 ACDT -10:30

Adelaide, Australia

Tropical

Placidus



These link closely with Steven's natal MC-IC and Lunar Nodal axis. So the changes he proposes to bring about (and he's actually able to bring about) should be interesting to watch!

Jill Amery is a local astrologer and one of our speakers at our June meeting.



Battle stations: predicting an election

Joel Valentine

On the day of the state election, Kris Svendsen and I presented a 'battle chart' at the FAA SA meeting to predict who would be the victor. The chart's message appeared to be very clear, but we also discussed charts for the closing of the polls, the Aries Ingress, as well as some of the potential perils in predicting election results. A short synopsis of the battle chart is discussed below, for those who missed it, as well as a short traditional analysis of Steven Marshall's natal chart (which would be impossible without the savvy birth-time collection by Jill Amery. Thank you, Jill!)

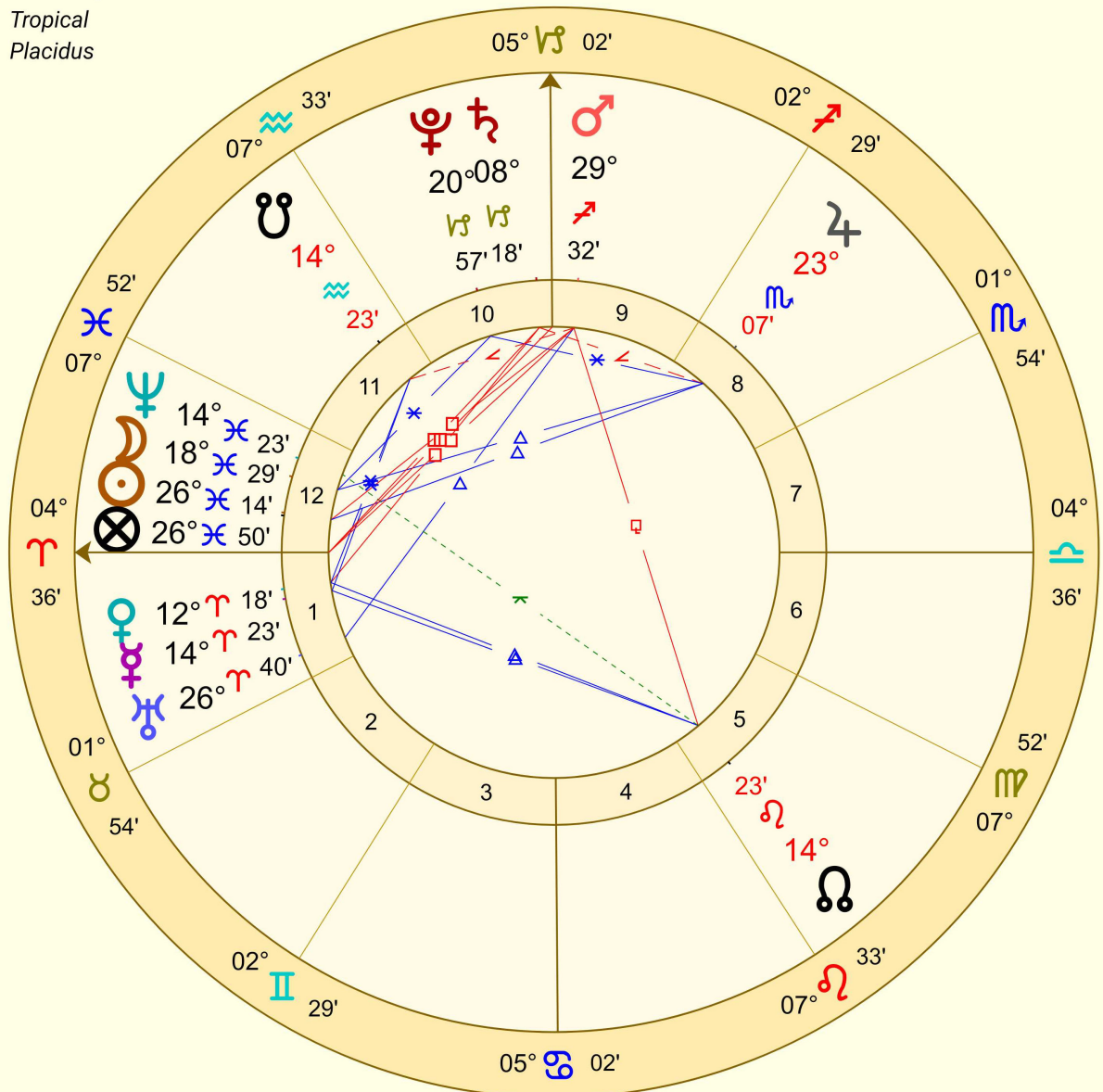
Those who are familiar with Bernadette Brady and her work in Adelaide may remember a period where she used astrology to make football 'tipping' predictions. At the 1997 Australis Conference, Brady presented some of her findings as well as the technical basis for this work. Thanks to Mari Garcia's collation and editing of the conference papers, we were able to draw on these techniques.

Much of Brady's work was based on the battle charts of Guido Bonatti, a 13th Century astrologer who worked in the courts of kings who wanted to win battles and sieges. The playing field is a little different in modern Australian politics and Brady makes no mention of political contests in her findings, potentially indicating that she didn't believe it to be an appropriate fit in terms of predictive techniques. That said, the battle chart for the election is an interesting exercise in dignity and debility, upon which much of traditional astrology is based.

Opening of the Polls

Natal Chart

17 Mar 2018, Sat
08:00 ACDT -10:30
Adelaide, Australia
Tropical
Placidus



Bonatti assigns the Ascendant and its ruler to the challenger. In this case, Steven Marshall and the South Australian Liberal Party. The Descendant and its ruler is then the Labor Party and Jay Weatherill. Immediately we see a strong contrast in the position, dignity, and therefore power of these rulers.

Aries rises in the chart and gives Mars to the Liberals. We find Mars in no especial dignity in Sagittarius but imminently about to change signs, generally indicating a change of fortune. Though, for better or for worse? The next sign is Capricorn, the sign of Mars' exaltation. Mars not only applies to a sign it is very comfortable in (and thinks highly of itself in!), but to the MC and therefore the 10th house, generally considered the house of government and significant power in any chart; Mars rains down on the other planets from this position. Added to this, Mars

is diurnally placed in the same hemisphere as the Sun. This incredibly hot and dry planet by temperament is really burning, and ready for battle.

By contrast, the ruler of the Descendant is Venus. Bonatti says that, "You ought to know that the superior planets, that is Saturn, Jupiter, and Mars, are stronger in wars and conflicts than the inferiors, that is Sol, Luna, and Mercury." And, as our audience pointed out, Venus is generally not interested in fighting anyone! Not only is Venus not very good at fighting wars (just starting them), in this chart she is severely weakened and in the pocket of the enemy. Venus is in Mars' sign, Aries, the sign of her detriment. Bonatti continues: "It is considered negative to have the ruler of the 1st in the 7th, as it implies that the first house army or team has been captured and visa versa." Had Labor lost before they even began? Further to this, Venus isn't above the horizon: almost as if she couldn't be bothered getting out of bed to show up to the dual.

The closing of the polls and the Aries Ingress charts seemed to tell a similar story, although not as strongly emphasised as the battle chart. In the closing of the polls chart (6pm on election day), the Liberal Party was signified by a retrograde Jupiter in Scorpio. Not particularly strong, but having just received a trine from the Moon, (who was in the sign of Jupiter's exaltation: regarding Jupiter very highly) the planet generally thought to signify 'the people', it seemed that Jupiter, and therefore the Liberals, would seize the day. Does the lacklustre nature of the closing of the polls chart and the Aries Ingress reflect that despite the victory both Liberal and Labor received one of their lowest primary vote count in history?

A good year for Steven Marshall?

Using traditional techniques, Marshall's profected Ascendant would have moved into the third whole sign at his recent birthday. This makes Mars the lord of his profected Ascendant and year. In some sense, therefore, the year will be characterised by a martian flavour. And he did have the battle of a lifetime! But in order to ascertain exactly how successful Mars will be for Steven, we need to look at his Solar Return chart.

Steven Marshall

Natal Chart

Inner Wheel

21 Jan 1968, Sun

05:43 ACST -9:30

Adelaide, Australia

Tropical

Whole Sign

Solar Return

Natal Chart

Outer Wheel

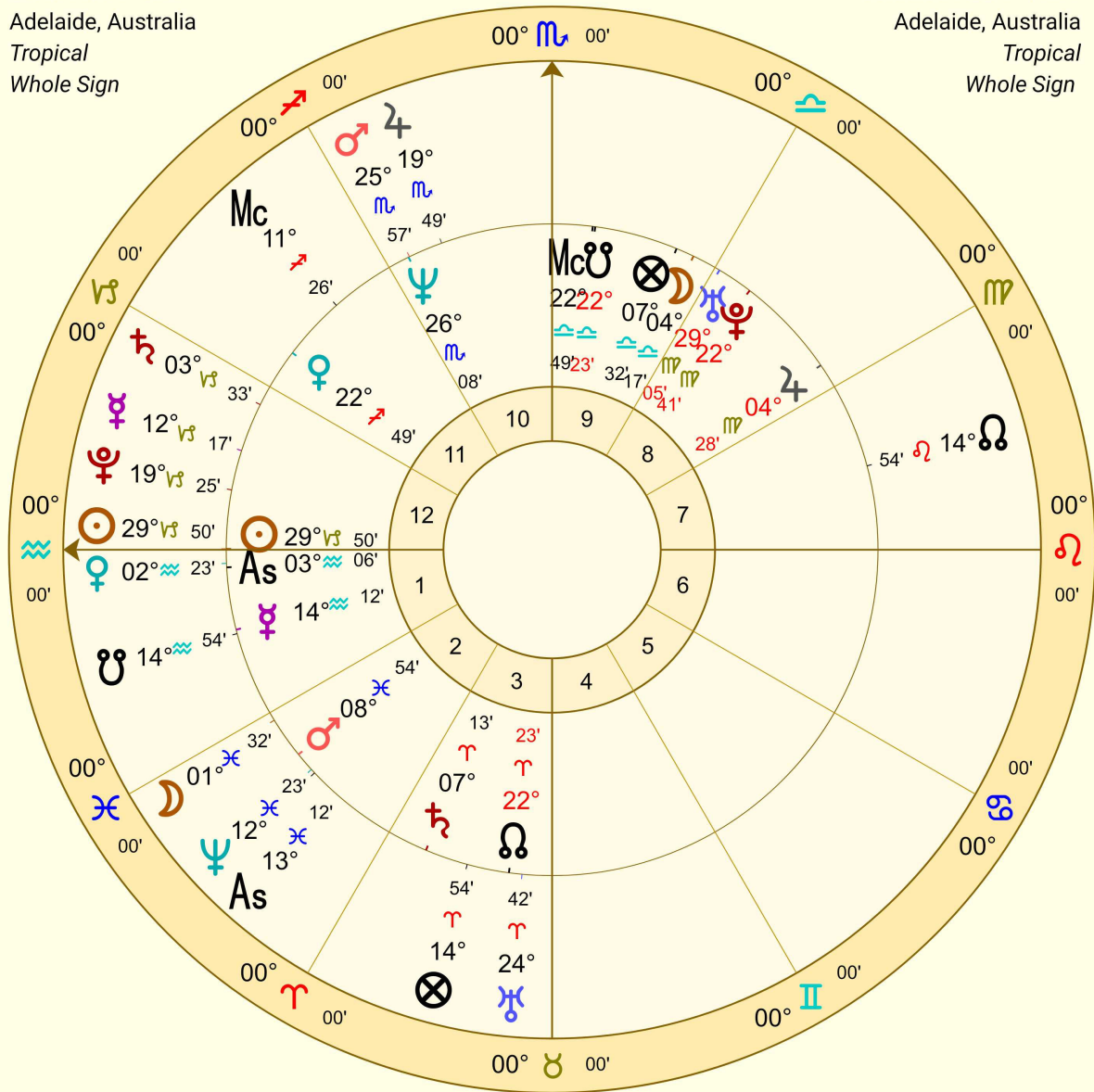
20 Jan 2018, Sat

09:58:03 ACDT -10:30

Adelaide, Australia

Tropical

Whole Sign



Honing in on Mars as lord of his year, we find it in an extremely auspicious placement at his Solar Return: in its domicile of Scorpio, it faces no difficult aspects from the other planets in the solar return chart, and is joined in its own sign by the great benefic, Jupiter. As lord of his year, and ruler of his natal 10th house, this makes Steven Marshall's year very promising in terms of his career, if a little martian and scorpionic! Some might say that you would need the 'behind the scenes' deals and understanding of hidden motivations inherent in this placement in order to be a politician.

Of note, though, is the relationship between Mars and Neptune in these charts. Solar return Mars is conjunct Steven's natal Neptune, and solar return Neptune is conjunct his natal Mars and solar return Ascendant. What about Steven's drive and energy this year, both very promising as symbolised by the strong Mars, will be clouded, or inaccessible at the same time, thanks to Neptune? We shall see.

Southern Star

Editor: Joel Valentine
Email: editor@faasa.com.au
Phone: 0429 231 390
Internet: www.faasa.com.au

Submissions: All articles and advertisements are to be submitted in word format (preferred) to the Editor via email by the 12th day of each month.

Disclaimer: The Editor reserves the right to edit or refuse submissions to the newsletter. The opinions expressed herein do not necessarily reflect the opinion of the Federation of Australian Astrologers or the Southern Star Editor

© Southern Star, FAA SA Inc 2017. All rights reserved.

FAASA Membership Fees

(per calendar year)

Full – \$80

Concession* – \$60

Joint Full – \$115

Joint Concession* – \$85

Newsletter Only – \$40

*Concession cards need to be sighted by the Treasurer when paying membership subs. Only pension cards and healthcare cards issued by Centrelink are deemed Concession.

FAASA Committee

President

Cate Whelan
08 8557 7417
president@faasa.com.au

Vice President

Kris Svendsen
0424 682302
vicepresident@faasa.com.au

Treasurer

Judy Best
0415 781 280
treasurer@faasa.com.au

Secretary

Anna Kadow
secretary@faasa.com.au

National Councillors

Cate Whelan
08 8557 7417
president@faasa.com.au

Kris Svendsen
0424 682302
vicepresident@faasa.com.au

Members

Anne Hamilton
08 7524 2726
hamilton.a26@gmail.com

Joel Valentine
0429 231 390
joalylbird@gmail.com

Bev Malin
08 8331 2118
bevmalin@internode.on.net

Adrienne Barkla
0408 241 250
adrienne.barkla@esotericstudies.net.au

Newsletter Editor

Joel Valentine
0429 231 390
editor@faasa.com.au

