



Leo 2017 edition:

Jill Amery on North Korea

Introduction to Esoteric Astrology, with
Adrienne Barkla

Plus all the analysis you need for the
latest eclipse

From the President

Clearly I suffer from Piscean idealism. I just can't get inside the heads of those people who have forced us into a ludicrous postal survey on marriage equality. Some of these people have even said that the survey will not change the way they plan to vote. So, why are we doing this?

We, the taxpayers of Australia, are to spend \$122 million because of power battles within the Coalition party room. We are paying this money to help them avoid internal conflict. I think it's about time our country's elected representatives learnt to play nicely together, and then started making grown up decisions.

A look around the world will show that the sky has not fallen in in the many countries which already have marriage equality. Countries we might identify with, such as Canada (2005) and New Zealand (2013) have survived and thrived. Even Mother England, beloved of the conservatives, came to the party three years ago.

To me, it's a matter of equal humanity. LGBT+ people should have the same opportunity to marry, with all the legalities and responsibilities that it entails, as straight people. They should have the same choice. To protest that they shouldn't suggests, to me, that they are being judged as lesser beings. What moral right do we have to make that judgement about anybody?

The real horror of all this is that LGBT+ people have become scapegoats. Their

relationships and their families have become public property so that anyone with half an opinion can set themselves up as judge. In fact, we are REQUIRED to judge them. This is an intolerable injustice and intrusion for some of our most vulnerable people. However, to boycott the vote would be to give the No case a free kick. I will be voting 'Yes'. August 24th is the deadline for enrolling to vote – encourage anyone you know who is not on the roll to sign up. Even my 80-year-old conservative cousins have put themselves up on Facebook with Equality banners. It's a matter of human dignity.

At our last meeting Joy Usher used images of the god Janus to talk to us about Saturn. Janus had two faces, one young, one old, could see both the future and the past, and governed beginnings and endings. Like Saturn, he governed thresholds. Joy looked at the two consecutive Saturn-ruled signs of Capricorn and Aquarius, the houses they might rule in a chart and which areas of life might therefore be a problem, depending on the house and sign of the natal Saturn. It was an interesting and informative talk, presented with verve and passion.

Next meeting we have a special treat – a return of our 'One Chart 4 Ways', this time with a couple of different speakers, all highly qualified in their fields. Once again they will be looking at a mystery chart, and you will have the chance to win a \$50 voucher for New Dimensions Bookshop if you can pick whose chart it is. Thanks to Vivien Lowe who has once again donated the voucher. Don't miss it – it's always a great afternoon!

May love and laughter light your days

Cate Whelan



Meeting dates 2017

September 9, 1 Chart 4 Ways: Vivien Lowe, Jill Amery, Adrienne Barkla, Mari Garcia

October 14, Vivien Lowe - Vesta



FAASA : Next Meeting Saturday 9 Sep 2 pm

ONE CHART... FOUR WAYS



THE TASK:

ASTROLOGERS HAVE DIFFERENT BACKGROUNDS AND PHILOSOPHIES. AT THIS MEETING 4 ASTROLOGERS WILL ANALYSE A MYSTERY CHART USING FOUR DIFFERENT TECHNIQUES. EACH INTERPRETATION ADDS ANOTHER LAYER SO THE PICTURE WILL BUILD UP BIT BY BIT! FINALLY YOU WILL BE INVITED TO IDENTIFY THE CHART. A \$50 BOOKSHOP VOUCHER IS UP FOR GRABS!

THE ASTROLOGERS:



CLASSICAL: Mari Garcia is co-principal of astrology school Astro Mundi and a faculty member of The Astrological Guild of Educators International. She has lectured extensively in Australia and overseas and writes regularly for local, national and international publications. Her work is available on the *Astro Mundi* website.

MODERN: Jill Amery is an experienced astrology consultant. She gained the certificate of the UK Faculty of Astrological Studies and graduated with honours from Noel Tyl's Master Certification course. She has been manager and moderator of his international e-group of students and graduates since then.



ESOTERIC: Adrienne Barkla follows Alice Bailey's works which relate to the evolution of the individual personality. Esoteric Astrology belongs philosophically to the Trans-Himalayan Wisdom Teachings (basically Buddhism) espoused to a 'modern' western audience by Helena Blavatsky and the Theosophical Society. It is a profoundly psychological approach and Adrienne is an experienced practitioner.

EVOLUTIONARY:

Vivien Lowe is an astrological researcher and lecturer. She will use Steven Forrest's Nodal Interpretation method which he describes as the "chart behind the chart," and so we will see what additional information his technique gives us about our mystery person!



TS Rooms behind New Dimensions Bookshop, 310 South Tce Adelaide

Members \$10, Concession members \$8, Non-members \$14. Afternoon tea provided.



North Korea: revisiting
Neville Lang's
rectification

Jill Amery

Jill Amery is an experienced, Adelaide-based astrologer. Here she tackles North Korea and what the stars may have in store concerning current global tensions. Jill is one of four speakers at our FAASA lecture, Saturday September 9

Many of us remember Neville Lang, who was a respected software designer and mundane astrologer who was Technical Director of Esoteric Technologies, working with Solar Fire programs. Sadly, he passed away in 2011, but prior to that he made a good connection with US astrologer Noel Tyl during their attendance at an international UAC astrology conference, and there he shared his rectification of North Korea's horoscope with Noel.

In April 2016, after the unusual pace of North Korean rocket and nuclear testing in early 2016, Noel started a discussion on his website forum suggesting that those interested could try working with Neville's rectification of September 9 1948, 5:27pm JT, P'yongYang, North Korea. The date is confirmed by Wikipedia.* This horoscope features a 14 Aquarius 26 Ascendant. (The date and time were previously open to question, as Nicholas Campion states in his mundane bible 'The Book of World Horoscopes' and a range between several days is given there.)

That chart seems very relevant now with the recent, rapid escalation of tensions between North Korea, the USA, as well as others in the region. The August 7, 2017 lunar eclipse at 15 Aquarius 25 fell closely on the Ascendant, opposed Pluto (ruler of 9th house of international outreach) at the Descendant. Pluto = Ascendant is hardly a surprise, as ever since the Kim dynasty's ascendancy in 1948 the country has been involved in power struggles with others, especially its neighbour South Korea, needing to prove their own empowerment over and over. North Korean leader Kim Jong Un's birth date is thought to be 8th January 1983 (source: Astrodatatabank), time unknown – but his Sun is at 17 Capricorn, the location of transit Pluto right now, reflecting extreme empowerment symbolism at this time.

In that North Korean chart, Saturn from the 7th house quinciles (165 degrees aspect) the Ascendant, signifying obsessive control needs, and Saturn rules the 12th house of secret enemies – there is no arguing with the top level of power and control there – government officials, family, whoever, are just disposed of (e.g. Kim Jong-Un's brother who was killed earlier this year and publicly, with nerve gas) when they become an inconvenient truth.

Alarmingly, there is natal Uranus at the Aries Point (the "world point" – potential for public projection). The country's world image is seen as isolationist, rebellious and autocratic, reflecting Uranian symbolism. Uranus rules the Aquarian Ascendant and is in hard aspect (135 degrees) to it. All together, these three mighty and uncompromising planets Saturn,

Uranus and Pluto seem to dominate the country's horoscope, and we now find ourselves with nuclear annihilation as a possibility. To add to the drama is a 'take charge' Sagittarian Moon at the MC (opinions needing to be respected) with final dispositor Jupiter in Sagittarius in the 10th house, ruling the MC.

Alarmingly too, the North Korean Saturn at 28 Leo 48 falls on US President Donald Trump's Ascendant, close to his natal Mars. Mars and Saturn are the traditional planets of war potential. As has been noted by astrocartography practitioners, Trump's A*C*G Mars rises at Washington DC and sets through North Korea! So while the initial trigger for Trump's bombing reactions in April this year were Syria and ISIS, the sabre-rattling with North Korea might prove to be more enduring (Donald Trump: 14th June 1946, 10:54am, New York, USA).

A quincile (obsession, compulsion, upset, upheaval) from slowest-moving-of-all planet Pluto to North Korea's Aries Point Uranus has been in aspect from 2014, coinciding with the destabilising reign of Kim Jong-Un when he was elected unopposed to the Supreme People's Assembly and assumed full power as leader.

North Korea's Venus in 6th, ruler of 3rd (collective mindset) and 8th (of shared values) squares Mars at the 9th house cusp (internationalism) and = the Saturn/Uranus midpoint: "hot and cold; off again, on again; feeling personally limited" (Tyl). Psychodynamically, the 6th house can symbolise how we co-operate (or don't) with others (derivatively, it's the 12th from the 7th house) – and Venus in Leo as here, quincile the Ascendant, will not appreciate being undermined. The need is to be 'top cat' in any competitive situation, and obsessive-compulsive about it too.

North Korea's Mars, close to the Lunar Nodal Axis, rules the 2nd house of sense of self-worth and finances. Many of this country's people are suffering through starvation while its leaders play with expensive instruments of war including nuclear weaponry. That Mars by Solar Arc squares natal Neptune in the 8th house this year (death wish?). Mars and Neptune often being prominent in terrorist-type attacks by crazed fanatics and zealots. Mars has arced from its natal placement close to the international 9th house cusp! (A planet's natal house symbolism is often brought to the planet being arced to). North Korea's Solar Arc Neptune conjoins MC ruler Jupiter this year too, suggesting (in this case) a lack of realism, delusion and exaggeration.

Transit Saturn is conjunct North Korea's Jupiter, concluding September 2017 (restrictions restricted through sanctions) and transit Pluto quincile Uranus (extreme, deeply-felt tensions) finishes in November this year, suggesting outcomes could be unpredictable for a while longer.

The upcoming total solar eclipse on 21st August 2017 at 28 Leo 53 links Trump's Mars-Ascendant with North Korea's Saturn in 7th, as well as China's MC at 27 Scorpio (China, with its Libran Sun: 1st October 1949, 3:15pm, Beijing is expected to be the major defuser in this volatile situation) and the USA Sibley chart's Moon at 27 Aquarius (USA: 4th July 1776, 5:10pm, Philadelphia), could be conclusive, especially as the eclipse path runs right through the United States. (Interesting too that the trigger Full Moon eclipse on 7th August 2017 at 15 Aquarius fell opposite China's natal Mars in the 7th house!).

In 2018, North Korea's Moon by Solar Arc will conjoin the Ascendant ("focus on personal needs and relationships to fulfil them" - Tyl). Could there possibly be some mellowing of behaviour by then, realising they're better off as part of an international community rather than being so isolated? Transit Neptune opposes North Korea's Sun from 2018, together with transit Uranus opposite their Mars. These varied symbolisms suggest ongoing unrest and hypersensitivity. So, this scenario might not go away easily, especially in view of the ongoing tensions in Donald Trump's horoscope.

Jill Amery

* The Democratic People's Republic of Korea (DPRK) was proclaimed on September 9 1948, with Kim as premier, taken from:

https://en.wikipedia.org/wiki/History_of_North_Korea#cite_note-31

Curious about the eclipse?

Here we cover all of your questions, with some links to three astute astrologers!

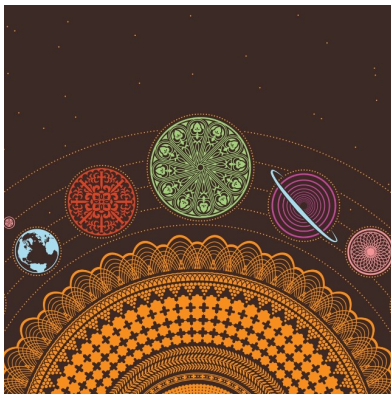
Wade Caves gave a lengthy run-down on what it means from a mundane perspective [here](#).

A little closer to home (and a little shorter!) Ed Tamplin gives his thoughts [here](#).

And if your interest is in personalised horoscopes for the eclipse, Chani Nicholas offers some inspirational affirmations [here](#).



Introduction to Esoteric Astrology



With Adrienne Barkla

Local, practicing astrologer Adrienne Barkla gives a very brief introduction to Esoteric Astrology in preparation for the Mystery - Chart 4 ways presentation, Saturday September 9.

The field of space is etheric in nature and its vital body is composed of the totality of etheric bodies of all constellations, solar systems and planets which are found therein. Throughout this cosmic golden web there is a constant circulation of energies and forces and this constitutes the scientific basis of the astrological theories
- 'Esoteric Astrology'

Esoteric Astrology is perhaps the least known and most misunderstood of the astrological methods. It emerged out of the Theosophical Movement through the writings of Alice A. Bailey in her series of 24 'Blue Books' which began to be published in the 1920s. The seminal text 'Esoteric Astrology' is the third of the five volume set 'A Treatise on the Seven Rays', the others being 'Esoteric Psychology Vols. I - II', 'Esoteric Healing' and 'Rays and Initiations'.

The philosophical framework outlined in the blue books have been variously described as the Ageless Wisdom Teachings, Trans Himalayan Wisdom Teachings or 'Tibetan Buddhism for the West'. It is this philosophical context that defines an esoteric astrologer. It presupposes the human being as part of an intricate web of energies which descends top down from the great constellations (Sirius, Great Bear and Pleiades), to the twelve zodiacal constellations, thence to the planets of our local solar system and, considering the Earth, to the kingdoms in nature of which humanity is said to be the throat chakra. All these systems are conceived as ensouled entities, and all are evolving.

The human being is considered a microcosm of the larger systems by the Law of Correspondences as it is termed, analogous to the Hermetic maxim 'As Above, So Below'. The human constitution is many layered and corresponds to the macrocosm reading from top down as: Monad [Spirit]; Soul [Higher Mind/Higher Self]; mental body; sentient-feeling [astral] body; and the etheric body which forms the scaffolding of the physical body.

Likewise, we are seen as a system of chakras or seven major force centres which distribute energy, each with their planetary rulers, such as Venus for the ajna centre, Mars for the sacral centre, Saturn for the throat, and so on. It is the quality of our individual consciousness and the refinement of our 'vehicles', or energy bodies, that determine the energies we can attune to and utilise, but they play upon us nonetheless. Graduated stages of spiritual development are posited, described by what seems rather archaic terminology to the modern ear, namely; an aspirant on the Path; probationary disciple; pledged then accepted disciple, and Initiate - stages which correspond most clearly to Tibetan Buddhist teachings and mind training practices.

It is stated that Esoteric Astrology does not deal with the personality life and its affairs but rather is concerned with the wider life of the 'Initiate' and the challenges and opportunities of a given incarnation to 'progress on the Path'. Although not everyone pursues mental or meditative practices, it is reasonable to assume most readers of this article are well integrated individuals, mentally polarised, aware of the mind-body dynamic, pursuing self-development, and open to philosophical and spiritual concepts. Whilst generally, I use modern, humanistic, psychologically orientated astrology and standard predictive methods in my practice, an esoteric reading or Soul-centered perspective can potentially clarify an individual's inner purpose and the outer circumstances through which it is to express.

There are significant differences in an esoteric reading outlined below.

- There are two levels of rulerships for each sign, exoteric (modern rulerships) which relate to the personality destiny and esoteric rulers which come into play when we become receptive to the subtler and higher energies through contact with the Higher Self. This is probably esoteric astrology's most distinguishing feature. The planets themselves and their constituent lives are at different stages of development with planets like Venus and Jupiter, for example, considered sacred and others such as Mars and Earth non-sacred. The meaning of a planet when considered as an esoteric ruler differs from its usual exoteric meaning, and relationships between the two rulers can indicate potential areas of personality integration and realignment.
- The consideration of the Seven Rays which are said to emanate from the great constellations through the zodiacal signs and planets and condition all phenomenal appearance. For example, Aries transmits the 1st ray of Will and Power and its exoteric ruler Mars the 6th ray of Devotion and Idealism, whilst its esoteric ruler Mercury transmits the 3rd ray of Active Intelligence. In the case of Taurus transmitting the 4th ray of Harmony through Conflict, its exoteric ruler Venus, transmits the 5th ray of Concrete Knowledge and Science and its esoteric ruler Vulcan (an inter-mercurial etheric planet said to be 8° either side of the Sun in the natal chart), the 1st ray of Will and Power, giving Taurus its characteristic

'stubbornness' or steadfastness in its more refined expression. Here we see why Esoteric Astrology raises eyebrows – but the human eye cannot see the waves of energy that move through the ethers connecting our devices and the internet, but we accept their presence. So, is it so incredulous to imagine a 'hidden' planet?

- The **rising sign** is given particular significance as it indicates the spiritual goal and purpose of the immediate incarnation and of succeeding incarnations. It is said to contain the 'secret of the future'.
- The **sun sign** shows the present condition of the person, indicating the quality, temperament and life tendencies seeking expression during this particular incarnation. It indicates the personality ray and shows the personality/soul integration already achieved.
- The **moon** is said to indicate the past and summarises limitation and present handicaps – one could say unregenerated personality patterns and ties to biological and inherited karma. It governs the physical body and shows where the evocatively termed 'prison house of the soul' is found. When reorientation of personality attachments have occurred it is said to veil Vulcan and Uranus and these planets can be substituted for the moon placement in the chart.
- House meanings are quite fluid in esoteric astrology as only the higher correspondences for material realities for which the houses stand were given for the first two by way of example, namely for the 1st house, physical body [exo] becomes the causal body [eso] and for the 2nd house, finances [exo] become prana and use of energy [eso], or the house of values material or spiritual. The remainder can be relatively easily derived.

Hopefully this brief outline will serve to set some context for the mystery chart presentation regarding the esoteric delineation as it is unfamiliar territory for many. And best of luck solving the mystery at the meeting!

Adrienne Barkla - Bach. Arch, M. Art Hist., Grad Dip. Psych., MSE Esoteric Psych. PhDE
Esoteric Philosophy

Adrienne has been practising professionally as an astrologer and psychotherapist for over 25 years. She studied modern astrology with Astro Logos with Bernadette Brady and esoteric astrology with ESCEF (Esoteric Sciences and Creative Education Foundation). She was awarded the Allan Johnson Gold Medal in 1994, being the first South Australian to do so! Specialising in Esoteric Astrology, she has had a lifelong interest in philosophy, spirituality and wisdom traditions and has taught numerous courses in these fields, written astrological articles and columns for several publications, and has organised and lectured at conferences and public forums in Australia and overseas.

Southern Star

Editor: Joel Valentine
Email: editor@faasa.com.au
Phone: 0429 231 390
Internet: www.faasa.com.au

Submissions: All articles and advertisements are to be submitted in word format (preferred) to the Editor via email by the 12th day of each month.

Disclaimer: The Editor reserves the right to edit or refuse submissions to the newsletter. The opinions expressed herein do not necessarily reflect the opinion of the Federation of Australian Astrologers or the Southern Star Editor

© Southern Star, FAA SA Inc 2017. All rights reserved.

FAASA Membership Fees

(per calendar year)

Full – \$75

Concession* – \$55

Joint Full – \$105

Joint Concession* – \$80

Newsletter Only – \$35

*Concession cards need to be sighted by the Treasurer when paying membership subs. Only pension cards and healthcare cards issued by Centrelink are deemed Concession.

FAASA Committee

President

Cate Whelan
08 8557 7417
president@faasa.com.au

Vice President

Kris Svendsen
0424 682302
vicepresident@faasa.com.au

Treasurer

Judy Best
0415 781 280
treasurer@faasa.com.au

Secretary

Anna Kadow
secretary@faasa.com.au

National Councillors

Cate Whelan
08 8557 7417
president@faasa.com.au

Joel Valentine
0429 231 390
joalybird@gmail.com

Members

Anne Hamilton
08 7524 2726
hamilton.a26@gmail.com

Joel Valentine
0429 231 390
joalybird@gmail.com

Bev Malin
08 8331 2118
bevmalin@internode.on.net

Newsletter Editor

Joel Valentine
0429 231 390
editor@faasa.com.au

