



Pisces 2017 edition:

Aspects of evolution - the final instalment of Vivien Lowe's introduction to Evolutionary Astrology
Kris Svendsen and his inspiration for progressed synastry
FAA Conference Melbourne 2018

From the President

Wishing you all a happy Aries Ingress, as we move into another astrological year! The Aries Ingress chart for Adelaide comes with Scorpio rising, Pluto on the IC, Mars on the descendant, and a tight Moon-Saturn conjunction. Looks like the year ahead might be hard work...

Aries Ingress Adelaide 2017

Natal Chart

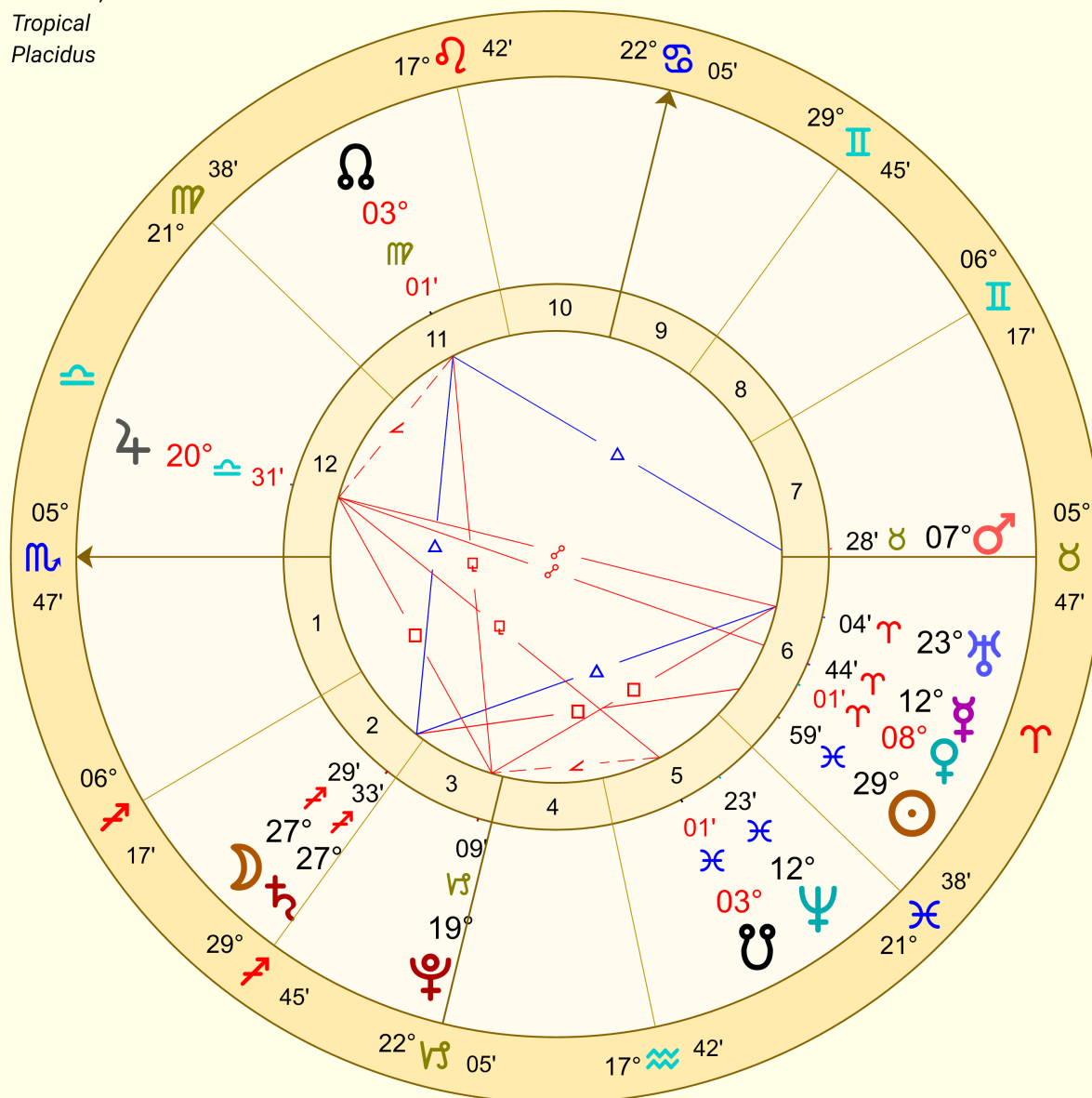
20 Mar 2017, Mon

8:58:34 PM ACDT -10:30

Adelaide, Australia

Tropical

Placidus



We had a great meeting in March with Jane Ahlquist's lecture on Pluto. If you weren't there, you can purchase an audio copy of the lecture by emailing vicepresident@faasa.com.au. We will email it to you, so make sure there is room in your inbox! It was certainly energetic and insightful.

Jane lives in the bush in NSW and her approach is very earth/body/mind/spirit. She has written a book titled *Astrology: History and Purpose*, which you can purchase by emailing her at artandspirit@antmail.com.au. There are also a few copies at New Dimensions bookshop.

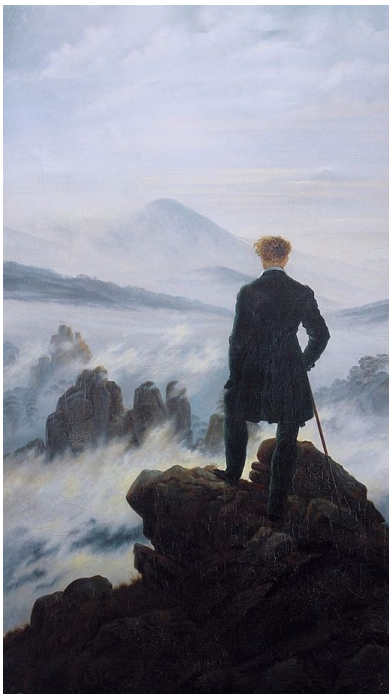
After the meeting a large group moved around to the Arab Steed, in Hutt St, and continued the discussion. It was a lovely, balmy evening and it is always good to relax and enjoy the company of fellow astrologers. We are very lucky to have such a great venue at the TS rooms, and a bonus is its easy proximity to places where we can relax and get a meal or a coffee.

Next week, at our April meeting, we look forward to hearing Kris Svendsen discuss his research on progressed synastry. This looks at connections between progressed charts in relationships – and what these can tell us about the nature of the connection. Sounds amazing! I hope to see you there.

May love and laughter light your days,

Cate Whelan

president@faasa.com.au



Meeting dates 2017

April 8, Kris Svendsen - Progressed synastry

May 6, Cate Whelan - Am I, are you, are we Australian? Chiron, Neptune and Australian attitudes to refugees and indigenous issues

June 10, Asking the Question: Horary, with 4 local speakers

July 1, Olga Morales - Workshop

Transits to watch

New Moon 7 Aries 37 - Mar 28

Jupiter square **Pluto** - Mar 31

Mercury enters **Taurus** - Apr 1

Venus retrograde enters **Pisces** - Apr 3

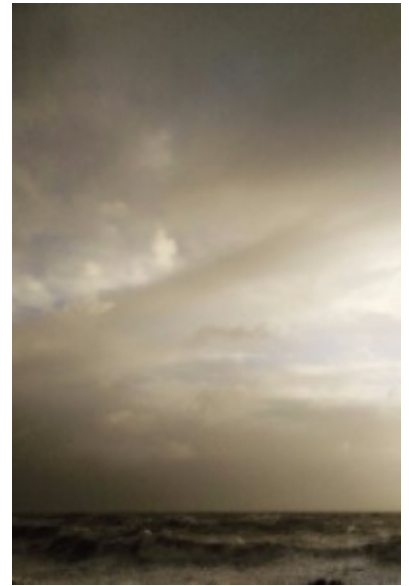
Saturn retrograde **27 Sag 48** - Apr 6

Mercury retrograde **4 Tar 51** - Apr 10

Full Moon 21 Libra 33 - Apr 11

Venus direct **26 Pisces 15** - Apr 15

Sun enters **Taurus** - Apr 20





FAASA next meeting: Saturday April 8, 2 pm



Timing that Big Relationship

Kris Svendsen



Kris has been practising and studying Astrology for over 40 years. In his early teens he was introduced to Cosmobiology and moved progressively through Uranian and modern western, to end up with eclectic interests that straddle traditional western astrology.

Kris conducts workshops, as well as teaching and consulting. He has also studied Vedic astrology for years due to its commonality with traditional western's predictive focus. He is a qualified Myers-Briggs assessor and has a strong knowledge of the Enneagram. He has been exploring the concept of progressed synastry for some time.

Kris will explore the not-so-radical concept of Progressed to Progressed Synastry, based on the book and research of Paul Westran.

This technique, examining the synastry between Progressed charts, confirms and times committed relationships even when there is no natal synastry between loving couples. It often describes the duration of our bonding experiences from short term flings to many years of happy travelling together.

Saturday April 8th, 2 pm, in TS Rooms behind New Dimensions Bookshop, 310 South Tce Adelaide.

Members \$10, Concession \$8, Non-members \$14. Afternoon Tea included.

More information: www.faasa.com.au, email president@faasa.com.au, or phone Cate Whelan on 8557 7417.



We would not have an association without you! So, please, renew your membership now.

New fees are:

\$75 full membership

\$55 concession

\$105 joint membership

\$80 joint concession



You can pay by Direct Deposit to ANZ bank, **BSB: 015 367, Account Number: 499070824** (with email to treasurer@faasa.com.au), or send a cheque made out to FAASA Inc to Treasurer, PO Box 7443, Hutt St Adelaide 5000.



The first early-bird booking date for the **2018 FAA Conference** is fast approaching. **Book before April 10** and you can attend the entire conference for \$759. Interested in accommodation? The early-bird conference price with a room at the venue included is \$1099. Booking early guarantees significant savings, and the conference is a must-see for all serious astrologers. [Click here for more information and to book.](#)



Aspect to the Nodes:

Introduction to Evolutionary Astrology, Part IV

With Viven Lowe

We now see Winston Churchill as someone who has a soul memory of a life as a ruler (Jupiter conjunct the South Node), and who was required to negotiate on behalf of his people (South Node in Libra). His position as ruler came naturally to him (Mars and Jupiter are both conjunct the South Node) and he assumed that he would be understood and that he, in turn, fully understood the

situation and the resources that he had at his command (third house Venus as South Node ruler, sextile Jupiter and the second house South Node). But he overestimated himself (Jupiter conjunct the South Node), or he ignored or misunderstood some vital communication (South Node ruler in third house), or a relationship (Libran South Node with Venus as ruler sextile the South Node) that he counted on failed him and there was a crucial loss that he blamed himself for. This failure has left a soul wound of underlying fear and uncertainty, which may have contributed to his well-known depression.

Winston Churchill (True Node)

Male Chart

Nov 30 1874 NS, Mon

1:30 am GMT +0:00

Woodstock, England

51°N52' 001°W21'

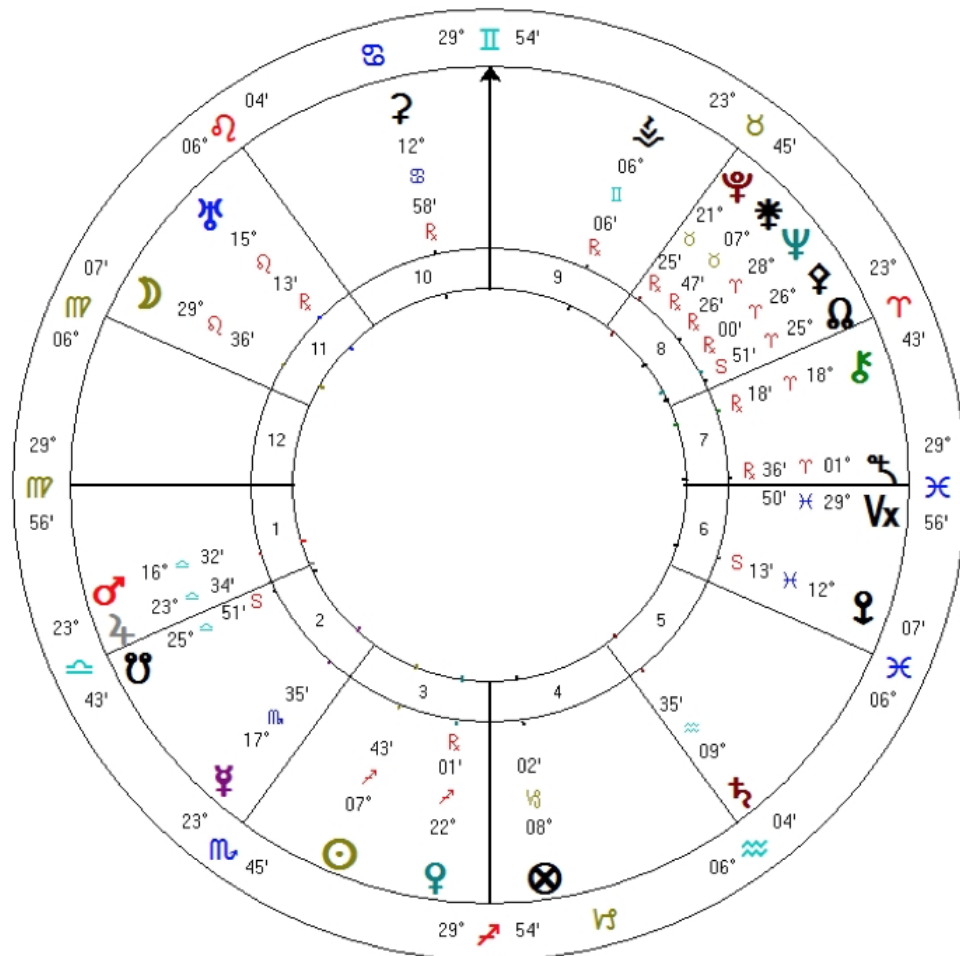
Geocentric

Tropical

Placidus

True Node

Rating: A



Planets aspecting the South Node

Planets conjunct the South Node are considered separately from other aspects and have been discussed previously.

All other aspects are seen as describing external forces that acted upon the person, or people who were important to achieving the person's goals.

In brief:

- Squares and oppositions are people or situations that we experienced as negative, challenging or as resisting us or our aims.
- Trines and sextiles suggest people and/or circumstances which were supportive to the person, or that encouraged some behaviour in the person that resulted in stagnation or loss.

- Other aspects may also give information, but beware of introducing too much detail (more information on other aspects can be found in Steven's book *Yesterday's Sky*).

There are no squares or trines to the South Node. Venus sextiles the South Node, but this has been discussed previously as it is the South Node ruler. The Moon sextiles the South Node, and Neptune, Chiron and Pallas Athene are in opposition.

Moon sextile the South Node

Before we can discuss this aspect, we have to consider whether Churchill has a Leo or Virgo Moon. As a birth time that is exactly on the half hour always raises the question of accuracy. If Churchill was a client, I would be looking at key events in his life to rectify his chart. That is a detailed analysis that is beyond the scope of this article. Looking at Churchill's life I feel that someone who was Prime Minister of England twice, and who was the major figurehead of the British Isles during the whole of the Second World War, is more likely to have a Leo Moon than a Virgo Moon.

The Moon often represents someone who was nurturing or supportive, and may represent the mother herself. In some cases there can be over protection leading to dependence. Think also of family and clan, powerful forces in our lives today but often a matter of life or death in previous times. There can be a loss of individuality as the self is surrendered to the needs of the clan. The Moon in Leo echoes the likelihood of someone who was born to rule. This lifetime Churchill was born a descendent of the Duke of Marlborough, whose family seat is at Blenheim Palace; a powerful family that gave Churchill the necessary role models for the behaviour required of those in power. But did he again give up his individuality to serve the expectations of his very powerful family? Interestingly, with a Leo Moon there can be escape into self-indulgence and Churchill was certainly well known for his love of food and drink.

Neptune opposite South Node

Neptune opposite the South Node echoes the tendency to lose oneself, whether it is in forms of escapism or the loss of self as the person sacrifices their freedom to take on the ideals and beliefs of his clan/family. In Winston Churchill we have a man born to rule with the ability to skilfully negotiate with allies and enemies alike. It is likely that this is someone who has learned to put the needs of his clan/family, or in Churchill's case his country, before his own needs. He will do whatever it takes to protect those who he feels responsible for, even if this goes against every instinct of what is morally right or ethical.

Chiron and Pallas Athene opposite South Node

Chiron opposite the South Node has an orb of approximately 6 degrees. I do not usually use the newer bodies unless the orb is very tight (about one degree), as Steven Forrest warns about introducing too much detail that can confuse the story. Pallas Athene however is within 9 minutes of the opposition to the South Node and is retrograding back towards it. With such a tight orb, this has to be relevant to our story. One of Pallas Athene's attributes is that of a Goddess of War, being born in full armour from the head of her father, Zeus. Being born from Zeus' head, she is rational and is also a Goddess of wisdom and, when strongly aspected, the person shows skill as a political strategist and in negotiation. However, Pallas Athene is in Aries in this chart, suggesting that there have been problems caused by rashness or by making assumptions, which is echoed by the South Node ruler, Venus in Sagittarius in the third house.

Conclusion

One of the most intriguing aspects of our exploration of this technique is that the story told by the South Node and its aspects has been consistent, with each finding confirming and expanding on the previous story.

First, we saw that the past had a powerful effect on Churchill's life as the South Node has many aspects. The South Node is in Libra, sextile its ruler Venus in the third house of communication, and

with Pallas Athene in partile opposition, suggestive of a life where relationships were key and formed the basis of skilled diplomacy and negotiation.

Churchill was 'born to rule' with Mars and Jupiter conjunct the South Node and his Moon in Leo. The responsibilities and duties, as well as the need to put his family/clan above his own individual need and desires, would have been automatic to Churchill (Moon in Leo sextile South Node and Neptune opposite South Node). However, with Pallas Athene in Aries opposing the South Node, Mars in Libra conjunct the South Node and the ruler Venus in Sagittarius there is the suggestion that rash action (Mars conjunct South Node), not thinking situations through (Pallas Athene opposite South Node), or ignoring details in favour of the big picture (South Node ruler Venus in Sagittarius sextile to the South Node) has caused problems.

The Moon in the second house suggests that resources, possibly the lack of them, had caused a failure that left deep wound.

This article ends the series on the South Node in evolutionary astrology. I hope that it has given some insight into how and why astrologers are using this technique.

References

The interpretation of Churchill's chart will use Steven Forrest's technique (<http://www.forreastastronomy.com/>).

Books:

Steven Forrest, *Yesterday's Sky* (2008), Seven Paws Press: Borrego Springs, California.

Sue Tompkins, *The Contemporary Astrologer's Handbook* (2006), Flare Publications: London.

Articles:

Eric Francis. Goddesses of Astrology. <http://ericfrancis.com/articles/Goddesses.html>

Astrology King. Asteroid Pallas Astrology. <http://astrologyking.com/asteroid-pallas/>

Vivien Lowe has been studying various forms of Astrology since 1978 and still goes to classes at Astro Mundi whenever possible. A born student, she is currently focussing on research, particularly Evolutionary Astrology, and the newer objects in the Kuiper belt and beyond.

Did you know that South Australia has three speakers at the 2018 FAA conference? Mari Garcia will be one of the well-respected return-presenters, and Jill Amery will be making her FAA conference debut. Find out more about some of the local and international speakers [here](#).



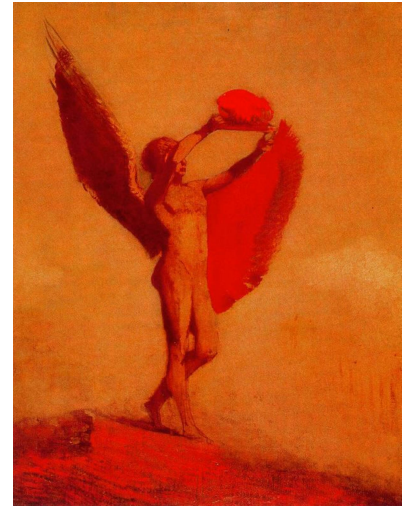
Unsure about the latest ingress? Cosmic Intelligence Agency have a lot of great writing, [and they happened to cover the recent Aries ingress](#). Find out what the beginning of the astrological year is about.



Planet to Planet:

Quick questions on progressed synastry

With Kris Svendsen



SS: How did you discover progressed synastry?

Basically, I was on Amazon and stumbled upon the book by Paul Westran, *When Stars Collide*. I thought it might just be another sun sign book. But I began to read it, and he had done some research, and offered some empirical evidence... And once I read it, I thought I'd test it myself - and it worked!

SS: Do you think new information is shared well in the astrological community? What historical or theoretical basis is there for the progressed synastry techniques?

I stumbled upon his work, and ended up making contact with Paul and he didn't mind me talking on the subject. I know I worked for many years as an astrologer on my own, without contacting anyone. And I think many people do that. As I said, I stumbled upon the book. So, in this case, the information came to me by chance.

Prior to his book, I hadn't come across the idea of secondary progressed synastry. From memory, Paul doesn't cite any previous studies in the book. The idea is that it is progressed to progressed planets, not progressed to natal. So, it shoots a hole in the idea that only things will happen that are promised in the birth-chart. And in many ways, it's a very new and rule-breaking idea.

SS: As a Venus in Pisces, you have a prime chart for relating. Is synastry a big part of your practice and life? Why do you think people love synastry?

My interest is in objective, event oriented astrology. My bent has been prediction for sometime, and this technique seems to offer some concrete prediction for relationships. Also, comparing your chart

with someone else offers some objectivity, and 'proof' - were they feeling the attraction too? Synastry is definitely a recent thing in my practice/astrology. And it's certainly popular with clients; people are desperate to know when they will meet someone, or whether a relationship will 'work'.

SS: Anything else you can tell us about the technique that might whet our appetite?

The technique of predicting relationships actually seems to work with Sun-Venus progressions, more than any others. But more about that at the meeting!

Kris Svendsen is an astrologer, educator, and the current Vice President of FAASA. He is available for consultations. He is also the speaker at our meeting, next Saturday, April 8.

Southern Star

Editor: Joel Valentine
Email: editor@faasa.com.au
Phone: 0429 231 390
Internet: www.faasa.com.au

Submissions: All articles and advertisements are to be submitted in word format (preferred) to the Editor via email by the 12th day of each month.

Disclaimer: The Editor reserves the right to edit or refuse submissions to the newsletter. The opinions expressed herein do not necessarily reflect the opinion of the Federation of Australian Astrologers or the Southern Star Editor

© Southern Star, FAASA Inc 2017. All rights reserved.

FAASA Membership Fees

(per calendar year)
Full – \$75
Concession* – \$55
Joint Full – \$105
Joint Concession* – \$80
Newsletter Only – \$35

*Concession cards need to be sighted by the Treasurer when paying membership subs. Only pension cards and healthcare cards issued by Centrelink are deemed Concession.

FAASA Committee

President
Cate Whelan
08 8557 7417
president@faasa.com.au

Vice President
Kris Svendsen
0424 682302
vicepresident@faasa.com.au

Treasurer
Judy Best
0415 781 280
treasurer@faasa.com.au

Secretary
Anna Kadow
secretary@faasa.com.au

National Councillors
Cate Whelan
08 8557 7417
president@faasa.com.au

Joel Valentine
0429 231 390
joalbybird@gmail.com

Members
Anne Hamilton
08 8523 5235
hamilton.a26@gmail.com

Joel Valentine
0429 231 390
joalbybird@gmail.com

Bev Malin

08 8331 2118
bevmalin@internode.on.net

Newsletter Editor

Joel Valentine
0429 231 390
editor@faasa.com.au



Copyright © 2017 Federation of Australian Astrologers, South Australia, All rights reserved.

Want to change how you receive these emails?
You can [update your preferences](#) or [unsubscribe from this list](#)

MailChimp