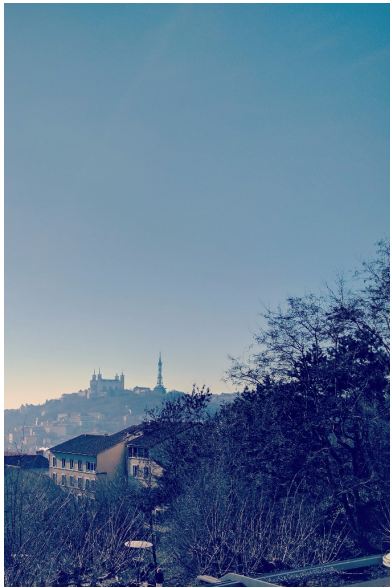


Dedicated to the astrology community of South Australia

[View this email in your browser](#)

Capricorn 2017 edition:

Winston Churchill uncovered, with Vivien Lowe
Need new aspects? Harmonics, with Alice
Portman
Henri Matisse; a colourful Capricorn

The passing of Roderick Kidston

It is with sadness that we share with you the passing of astrologer Roderick Kidston. Roderick was a Victorian-based astrologer, but had delivered lectures in South Australia. He was known, respected, and loved by many in our community.

We pay our respects to Roderick and his loved ones, and trust his work and spirit will be remembered.



From the President

On Saturday 14th January I attended the National Council meeting in Brisbane - the AGM for the national FAA. I was representing SA and the meeting was a gathering of state reps from all over Australia (our other National rep, Joel, was overseas at the time). Our local treasurer, Judy Best, also attended wearing the hat of Journal Editor.

This annual gathering of astrologers from all the states is a great reminder that we are not just a local group, we are part of a national organisation. While we are an incorporated, independent autonomous association, we are also part of a collective; the national Federation of Australian Astrologers. The interchange of ideas and perspectives, the cross-fertilisation and the sharing of techniques and processes that occurs at these meetings is a benefit to all of us.

This time we were working on an updated Code of Ethics, one which reflects the modern world of technology and social media. The Code of Ethics is one of our most important documents; it is the moral code of our organisation, and it is paramount that all members subscribe to it. When the new version is released we will put it in the newsletter. There is also a copy in each journal, and on our website.

We also discussed some upcoming improvements to the FAA journal, envisioned by Judy Best. These won't be implemented until late in the year, but I know that you will love them!

Next January, there will be another National Conference in Melbourne. [Check it out on their national website](#). There are lots of international speakers, as well as some of the best talent from around Australia. It's a wonderful opportunity to soak up the atmosphere and immerse yourself in your favourite subject – astrology! Earlybird bookings are already open.

Our next meeting will be on the second Saturday in February, and three fabulous astrologers –Alice Portman, Mari Garcia and Jill Amery –will be assessing the year ahead. Don't miss it!

May love and laughter light your days

Cate Whelan

president@faasa.com.au



Meeting dates 2017

Put them in your diary!

February 11 - 2017 What lies ahead?



March 18 - Pluto, with Jane Ahlquist

April 8 - TBA

May 6 - TBA

June 10 - Asking the Question: Horary

July 1 - Workshop, with Olga Morales

Transits to watch

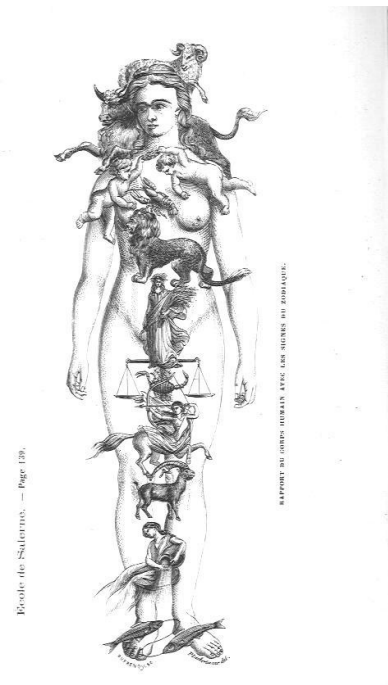
Venus enters **Aries** - Feb 3

Jupiter retrograde **23 Libra 08** - Feb 6

Mercury enters **Aquarius** - Feb 7

Full Moon Lunar Eclipse 22 Leo 28 - Feb 10

Sun enters **Pisces** - Feb 18




FAASA : Next Meeting Saturday 11 Feb, 2 pm

OUR SPEAKERS



Alice Portman—SA's astrological godmother



Mari Garcia—a top mundane astrologer



Jill Amery—respected predictive astrologer

2017:

What Lies Ahead?

Predictions for the coming year

With major changes around the world, will we have an ill wind or a calming breeze? Will we experience hurricanes or be becalmed by complacency?



TS Rooms, behind New Dimensions Bookshop, 310 South Tce Adelaide

Members \$10, Concession \$8, Non-members \$14

Afternoon tea provided

More info: Cate Whelan, 8557 7417,
president@faasa.com.au



Churchill's South Node:

Introduction to Evolutionary Astrology, Part II

With Viven Lowe

Winston Churchill was a statesman and politician who served as British Prime Minister twice, most famously during the second World War. He was also an officer in the British Army, an historian, an artist, and a writer who won the Nobel prize in Literature in 1953. His stated birth time is 1:30am (from his father to John Addey; see Solarfire database).

This birth time places the MC, Ascendant and Moon right at the end of their signs; an issue that we will discuss as we develop this interpretation. His South Node is clearly in Libra and conjunct the second house cusp.

The more powerfully the South Node is connected to the chart, the greater the impact that the past will have in the current life.

In this chart, the South Node is heavily aspected with a conjunction to Jupiter and Mars, an opposition to Chiron and Neptune, and with the nodal axis part of a wide kite to the North Node, Moon and Venus.

South Node's sign and house

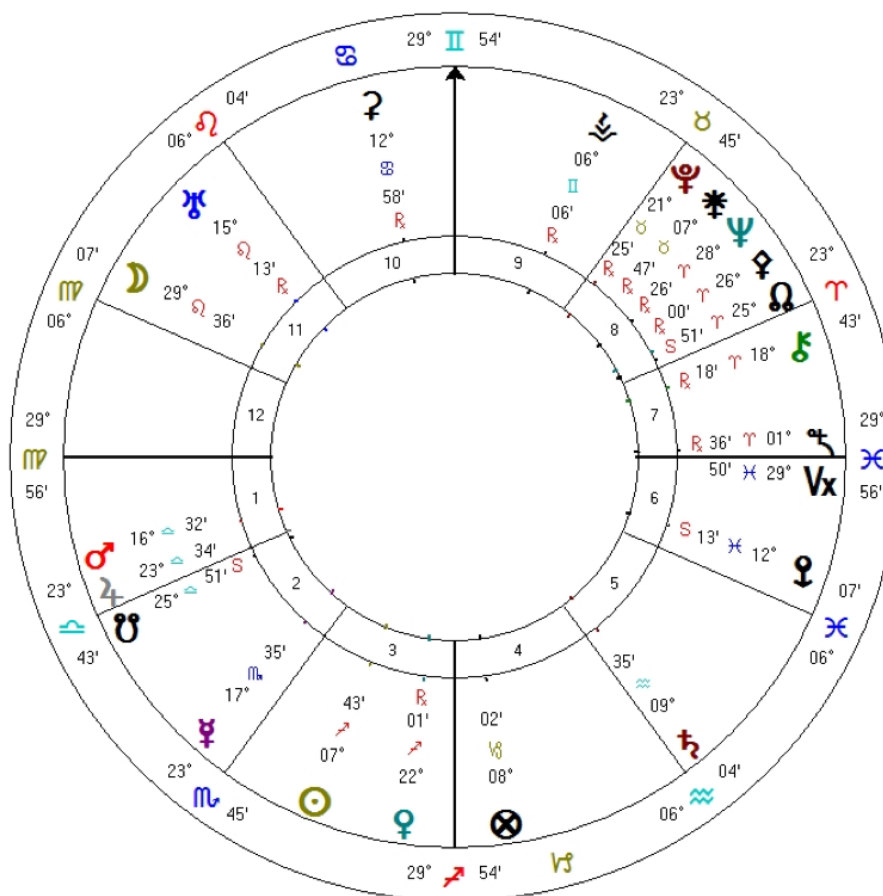
The South Node sign tells us the nature of the person in the past, what they were born to do. Steven Forrest describes it as the core identity and "soul contract". Essentially, read the South Node sign as you would a Sun sign but use a more negative interpretation. For example, Aries could be considered rash and aggressive, and Taurus potentially stubborn. We read the South Node in a negative manner as we are assuming that the soul contract of the past was not fulfilled, otherwise there would be no need to re-visit these issues.

If the sign of the South Node is the nature of the person, then the house of the South Node tells us about the environment that the person found themselves in, the conditions of that life. For example, a first house South Node speaks of someone who was free to act, but may have been forced to make decisions before they felt that they had all of the information that they needed. A second house South Node suggests that resources, financial or otherwise, were an issue for this person; either they had great wealth and were restricted by it, or they lacked what was necessary to achieve their aims.

Winston Churchill

Winston Churchill (True Node)**Male Chart**

Nov 30 1874 NS, Mon
 1:30 am GMT +0:00
 Woodstock, England
 51°N52' 001°W21'
 Geocentric
 Tropical
 Placidus
 True Node
 Rating: A



Churchill has a Libran South Node. This speaks of someone for whom relationships were key. This may, of course, have been intimate relationships however we must not forget that diplomacy and negotiation have been vital for all civilisations. Using the more negative reading of Libra, we have someone who may have lost sight of the important issues in their desire to make the treaty; to weld the alliance. Compromise can become the end itself for this person, instead of a step towards achieving something worthwhile. This is also the person who wears a mask that makes their way through life easier. Only to find that, ultimately, their true identity has been lost behind that mask. Looking at Sue Tompkin's book, *The Contemporary Astrologer's Handbook*, we also see that the Libran need for harmony and fairness can lead to indecision and inaction.

The South Node is in the second house. So, resources, in the broadest sense, were key to this person not being able to achieve something important in the previous life. History is full of famines and wars that have resulted in hardship and starvation. So, the issues around resources may have been as basic as a lack of food and shelter, leading to premature death before achieving their goal. But it is important to remember that wealth can also limit one's actions; that someone may fail because they had the physical resources but had surrendered their ability to act independently (the Libran South Node putting compromise above their ultimate goal). We will discuss indicators of past wealth or lack when we look at the planets aspecting the South Node, but we know that this person failed to achieve what was important to them, and that they have been left with fear and self-doubt about their ability to succeed.

During World War 2, Great Britain faced great hardship and privation as convoys were destroyed leaving the island short of food and the necessary armaments for war. As Prime Minister, Churchill was intimately involved in the diplomacy and negotiation, particularly with the Americans, that kept the country running. Even without knowing Churchill's emotional reaction to his role as wartime Prime Minister, we can see that this soul has been born into a time and position that caused him to re-visit the key issues of his South Node.

See you in the next newsletter for a discussion of the ruler of the South Node and planets conjunct the South Node.

References

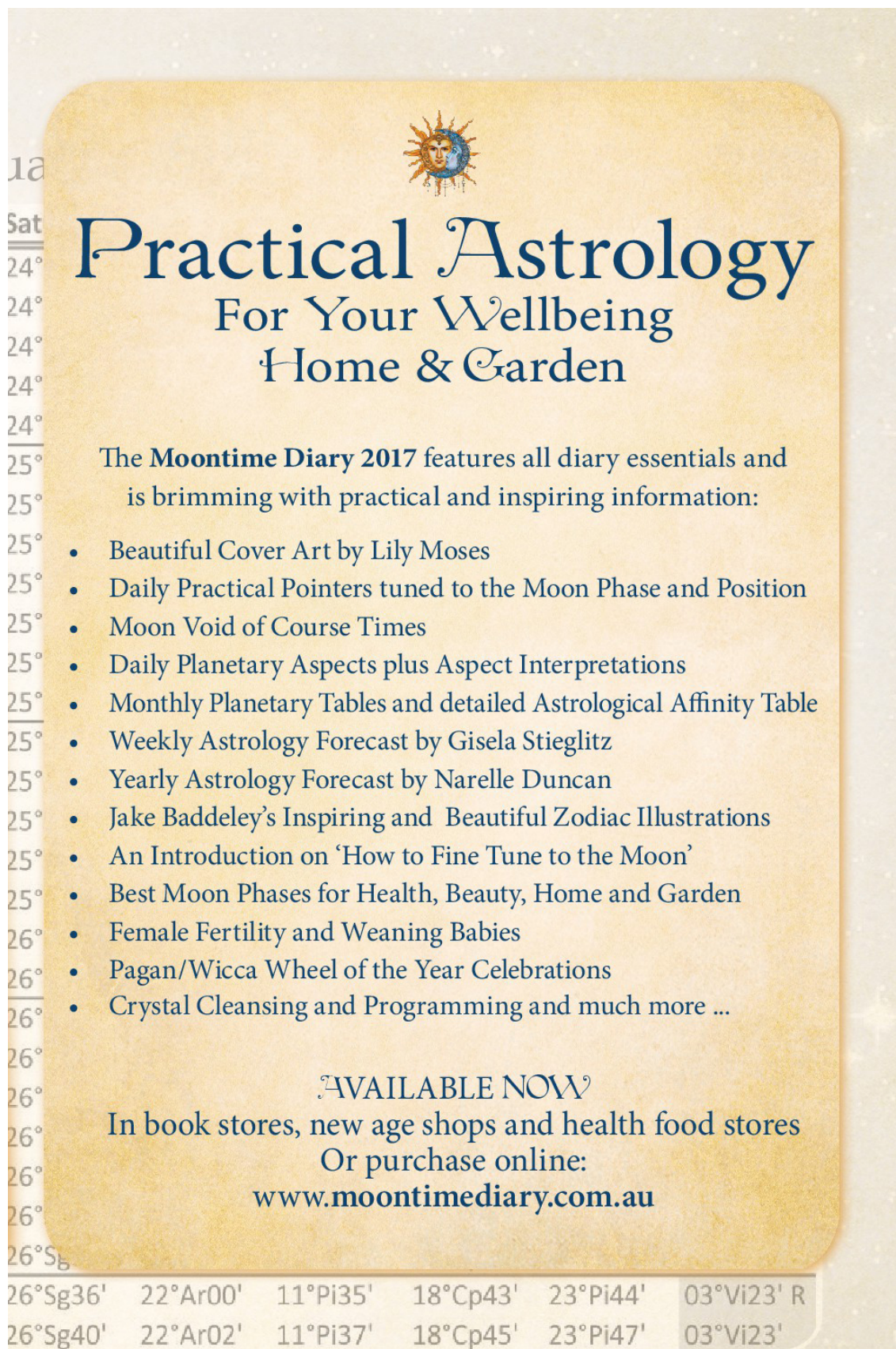
The interpretation of Churchill's chart will use Steven Forrest's technique (<http://www.forreastrology.com/>).

Steven Forrest, *Yesterday's Sky* (2008), Seven Paws Press: Borrego Springs, California.

Sue Tompkins, *The Contemporary Astrologer's Handbook* (2006), Flare Publications: London.

Vivien Lowe has been studying various forms of Astrology since 1978 and still goes to classes at Astro Mundi whenever possible. A born student, she is currently focussing on research, particularly Evolutionary Astrology, and the newer objects in the Kuiper belt and beyond.





Practical Astrology

For Your Wellbeing Home & Garden

The **Moontime Diary 2017** features all diary essentials and is brimming with practical and inspiring information:

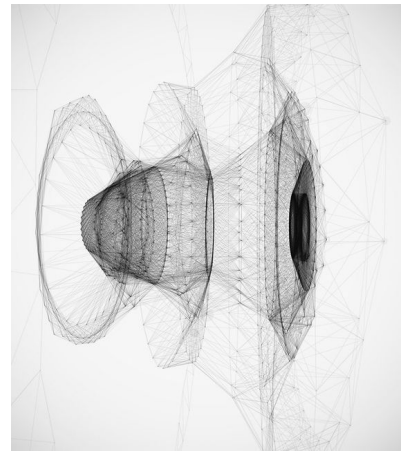
- Beautiful Cover Art by Lily Moses
- Daily Practical Pointers tuned to the Moon Phase and Position
- Moon Void of Course Times
- Daily Planetary Aspects plus Aspect Interpretations
- Monthly Planetary Tables and detailed Astrological Affinity Table
- Weekly Astrology Forecast by Gisela Stieglitz
- Yearly Astrology Forecast by Narelle Duncan
- Jake Baddeley's Inspiring and Beautiful Zodiac Illustrations
- An Introduction on 'How to Fine Tune to the Moon'
- Best Moon Phases for Health, Beauty, Home and Garden
- Female Fertility and Weaning Babies
- Pagan/Wicca Wheel of the Year Celebrations
- Crystal Cleansing and Programming and much more ...

AVAILABLE NOW
In book stores, new age shops and health food stores
Or purchase online:
www.moontimediary.com.au

26°Sg36'	22°Ar00'	11°Pi35'	18°Cp43'	23°Pi44'	03°Vi23' R
26°Sg40'	22°Ar02'	11°Pi37'	18°Cp45'	23°Pi47'	03°Vi23'

How Harmonics Work

With Alice Portman



The concept of harmonics was first presented by John Addey, in his book *Harmonics in Astrology*:

"What is needed is a vision of the underlying realities of our science in the light of which astrological concepts can be coordinated, simplified and unified. [...] The picture that has so emerged is one of the harmonics, that is, the rhythms and sub-rhythms of cosmic periods, which can be demonstrated to provide the basis of all astrological doctrine both ancient and modern."

Harmonic astrologers understand that aspects in a chart are derived from the division of the circle. Astrologers calculate them using the base number 12, so the aspects in a chart are found by dividing the numbers 1-12 into 360 degrees.

$360/1 = 360^\circ = \text{conjunction} = 1\text{st harmonic}$
 $360/2 = 180^\circ = \text{opposition} = 2\text{nd harmonic}$
 $360/3 = 120^\circ = \text{trine} = 3\text{rd harmonic: 3 point star}$
 $360/4 = 90^\circ = \text{square} = 4\text{th harmonic: 4 point star}$
 $360/5 = 72^\circ = \text{quintile} = 5\text{th harmonic: 5 point star}$
 $360/6 = 60^\circ = \text{sextile} = 6\text{th harmonic: 6 point star}$
 $360/7 = 51^\circ 25' = \text{septile} = 7\text{th harmonic: 7 point star}$
 $360/8 = 45^\circ = \text{semisquare} = 8\text{th harmonic: 8 point star}$
 $360/9 = 40^\circ = \text{novile} = 9\text{th harmonic: 9 point star}$
 $360/10 = 36^\circ = \text{decile} = 10\text{th harmonic: 10 point star}$
 $360/11 = 32^\circ 43' = \text{undecile} = 11\text{th harmonic: 11 point star}$
 $360/12 = 30^\circ = \text{semisextile} = 12\text{th harmonic: 12 point star.}$

These basic harmonics can be multiplied and still retain their core meaning. For example, the fifth harmonic (the quintile) is an aspect of 72 degrees. When multiplied by 2, it equals 144 degrees and becomes the bi-quintile.

More examples:

The seventh harmonic = $51^\circ 25'$ multiplied by 2 = $102^\circ 50'$ = bi-septile and multiplied by 3 =

$154^{\circ}15' = \text{tri-septile}$.

The eighth harmonic = 45° multiplied by 3 = $135^{\circ} = \text{sesiquadrate}$.

The ninth harmonic = 40° multiplied by 2 = $80^{\circ} = \text{bi-novile}$, multiplied by 4 = $160^{\circ} = \text{quadnovile}$, and so on.

Harmonics in practice

Most astrologers, new and old, modern and traditional, are familiar with how the 1st (conjunction), 2nd (opposition), 3rd (trine) and 4th (square) harmonics work, so I won't comment on these. Below is a short description of some of the harmonics you may not be familiar with.

Orbs of all these harmonic aspects are kept very small; my suggested maximum orb is 2 degrees.

5th Harmonic Quintile series 72° and 144°

Quintiles are an aspect of power. They describe the creative/destructive processes in human life. They are usually highlighted in the charts of highly creative people in various occupations. They give an understanding of patterns and structures.

7th Harmonic Septile series $51^{\circ}25'$, $102^{\circ}50'$, $154^{\circ}15'$

Septiles are wisdom seeking aspects. They give an ability to comprehend realities outside 'the norm'. If a septile pattern involves outer planets it is an indication of a person who is quite different to the more 'everyday' humanity. Septile series people are prominent in science, religion, astrology, research, and psychic areas. In fact, these people are often present in any area that could be considered deeper or more recondite.

8th Harmonic semisquare series 45° , 135° and includes 1st (conjunction), 2nd (opposition), and 4th (square) harmonics

These are the 'action' series of aspects. They are excellent for timing events in the life which are easily identified in a graphic ephemeris (or more information on graphic ephemeris and how to use them, [click here](#)).

In a natal chart the semisquare gives a tendency for self-criticism and the sesiquadrate (135°) gives the likelihood of criticism from others. Both are strong motivators to make changes in the native's life.

This is a very powerful series of aspects; so powerful that a whole system of astrology is based on them, called Cosmobiology.

9th Harmonic Novile series 40°, 80°, 120° (trine), 160°

Noviles always describe an initiation, and in a natal chart describes the initiations to be undertaken this lifetime. The level of intensity is described by the planets and signs involved in the novile aspect or pattern. For example, if a person has the Moon novile Pluto, then the level of emotional intensity will be very high.

If novile aspects are connected in a novile pattern, it suggests that this lifetime is part of a series of initiations and are often characterised by some level of success. If the novile pattern involves a trine this suggests that the trine (indication of a successful initiation) enables the person to succeed with the other planets involved in the pattern.

Initiations that have been successful tend to give very pleasant results, so the novile series of aspects have developed a rather nice reputation. However, I think that the quad-novile (160°) can be an indication of a very testing initiation connected to the planets and houses involved. This is particularly the case if there is a quad-novile arrow of two planets in a 40° aspect and both making a quad-novile aspect to a third planet. In this case the point of the arrow is the crucial planet and will require considerable awareness and skill to navigate.

10th Harmonic Decile series 36°, 108° and includes 72°, 144°

The decile is half a quintile so this series of aspects have many of the qualities of the quintile and can be used with them. This harmonic series is helpful in transmuting creative ideas into reality. It increases the ability to stick to the creative processes despite obstacles, and can be a highly intuitive aspect.

11th Harmonic Undecile series 32°43'38", 65° 27', 98° 11', 130°54'. 163°38'

Probably the hardest aspect to understand. It shows imagination and fantasy but can be unstable. It is always seeking something new. It shows the ability to reach out into the universe for answers. People with these aspects highlighted need to get enough sleep and regularly 'earth' themselves to get the best out of this series.

12th Harmonic semisextile series

This series has within it the 1st, 2nd, 3rd, 4th and 6th aspect series and includes the semisextile and quincunx. So, generally, it represents many of the resources available to an individual as it covers so much of the chart's aspect patterns.

These are the basic 12 harmonic aspects but there are many others emphasising specific qualities within the nature of the person. For example, the quindecile is part of a 24th harmonic aspect

series. It is also important to note that many harmonic aspects are still being researched.

I have written more on the subject here:

<http://aliceportman.com/category/aspects/>

<http://aliceportman.com/category/harmonics/>

David Cochrane has written extensively about harmonics [here](#), including the results of his research.

Alice Portman has been a student of astrology for 46 years and a consulting astrologer and teacher for 43 years. She obtained her Professional Member of the FAA qualification in 1984 and was subsequently an Examiner for the FAA in 1986-1988. Alice worked with harmonic astrology long before Graham Dawson was kind enough to make the calculations available on Solar Fire. Dymock Brose first interested her in the system and when he found out she was hand-calculating all the harmonics he was kind enough to send her the tables he created to make calculation much easier. Alice also discovered and pioneered the Duad system of genetic astrology. Another major interest is Southern Hemisphere astrology, as much of the astrology based on the seasons of the Northern Hemisphere isn't relevant.

For more information on Alice and her work, visit her website: aliceportman.com

Alice will also be one of the speakers at our first meeting of 2017.

Day 1 Evolutionary Astrology
Mercurial Connections – Sat Feb 25
Day 2 Lunar Saros Workshop
Murray Beauchamp – Sun Feb 26

FOR DETAILS &
REGISTRATION:
Lisa
0412013744
Christine
0417043726




\$110 1 day
\$200 2 days
Book now!



MERCURIALCONNECTIONS.COM.AU

Lisa and Christine - Mercurial Connections

An Introduction to Evolutionary Astrology

This 1 day workshop will have you looking at the chart through the eyes of Evolutionary Astrology, with the focus on the lunar nodes, based on the teachings of Steven Forrest. These fundamental elements will come to life in a new light as we look to incorporate profound yet simple ways to deepen your understanding of the souls evolving journey. These techniques lead to a greater wisdom and understanding through self awareness of our life path. We will be presenting charts as well as working on charts of participants as real life examples of this rich form of astrology

Murray Beauchamp - Lunar Saros Workshop

This latest workshop continues to develop our understanding of our pre natal eclipse and its relationship to the Saros, a relationship representing the possibilities that exist when our soul touches energy from another level. Entering this relationship opens us to a further understanding of our life journey. Our pre natal eclipse connects us to a lunar Saros series, a series of eclipses with a beginning and end, Saros is relevant to our life.

Where: New TS Bookshop.
310 South Terrace, ADELAIDE S.A

When: Sat 25th & Sun 26th Feb'17

Henri Matisse:

A Colourful Capricorn

With Joel Valentine



Henri Matisse is a world-renowned artist. It is no surprise, then, that his 5th house is jam-packed. He's also a Capricorn. Let's take a quick look, from a traditional perspective.

Henri Matisse

Natal Chart

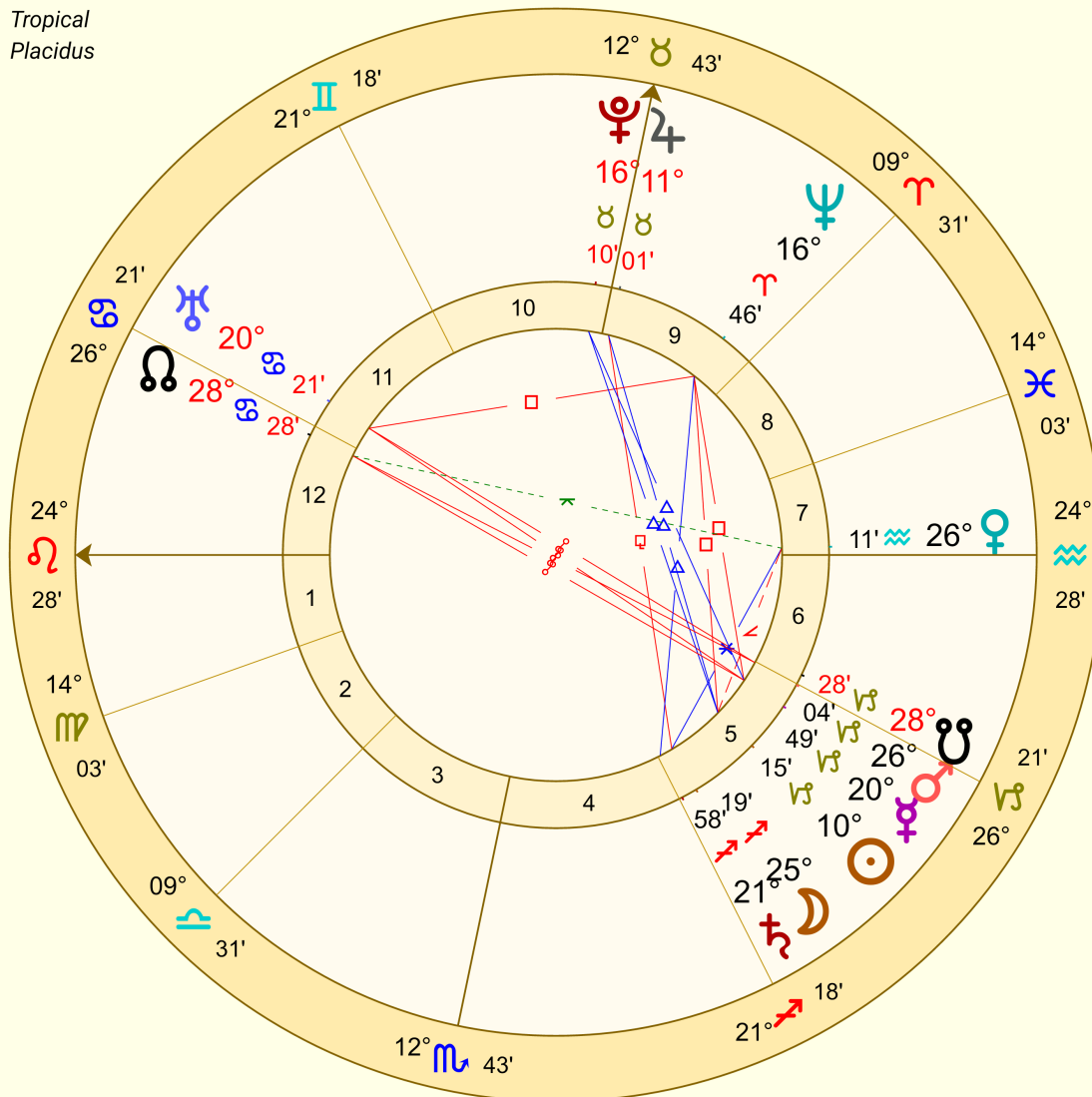
31 Dec 1869

8:00 PM LMT -0:14:12

Le Cateau, France

Tropical

Placidus



Artistry is not a trait that we would immediately associate with the sign Capricorn, and yet Matisse lived and breathed his work. And that might be the important distinction: work.

Biographies on Matisse mention that "he did not quite fit in," in the art-crowd, "...with his conservative appearance and strict bourgeois work habits." And who rules Matisse's appearance? Arguably the first house ruler, the Sun, in the hard-nosed sign of Capricorn. The Sun is joined here by Mercury and an exalted Mars; a dogmatic mind, and a real task-master. But while Matisse was known for reinventing the use of black as a colour in painting (black is traditionally ruled by Saturn; ruler of Capricorn), he was also known for his colour. And his women.

In an overwhelmingly Earth chart, we find some lightness in Matisse's Venus. Placed exactly on

the Descendant, she speaks of the lovers, models, and muses that inspired much of Matisse's work. She is also received by Saturn in a sextile from the 5th house; the structure that underpins the artistry. Venus also rules the 10th house of public acclaim; inspired by partners and lovers to create art work that has public appeal. Drawn to the 10th house, our eye is then drawn to Jupiter (and Pluto!), who rules the 5th house. Having both benefics linked to Matisse's house of creativity does bring some benefit. But this Saturn-heavy chart is also a double-edged sword.

Where Saturn can bring structure, it can also bring restriction and denial. Saturn's conjunction to Matisse's Moon indicates his Saturnian nature (Matisse preferred to work from 'reality', but his friend and rival, Pablo Picasso, preferred to work from imagination; [maybe that's what happens when you add some water](#)), but it also speaks of his estrangement from his children (5th house), and difficulty with his health.

Traditionally the Moon is indicative of a person's body and, by extension, health. Saturn in hard aspect to the Moon can indicate stresses on the body. Added to this is Saturn's rulership of the 6th house of handwork and illness in Matisse's chart. The Saturn-Moon relationship in this chart could indicate that restrictions placed on the body will be a major story in the life. Saturn's rulership of the 6th and placement in the 5th links the topics of these two houses. Matisse's biography is riddled with art, but also illness. And in several instances it was his illness (6th house ruled by Saturn) that led to his exploration of a new art form or idea (Saturn placed in the 5th house); it was in his sick-bed that Matisse received his first painting set from his mother. And it was in his sick-bed that he started creating art out of paper-cut outs in the 1950s, and once again became a leading figure in the art-world.

True to Capricorn-form, Matisse worked right up to the day of his death. He was 85.



From the Editor

Apologies for the delay in getting our Capricorn issue to you! It is coming out in Aquarius season, but as Saturn traditionally rules both I'm sure he won't mind.

I have just experienced my first Northern Hemisphere winter, and found the change interesting! Of course, for those zodiac systems based on the solstice and equinox points, the signs are inextricably linked to the seasons. I was interested to see in Alice Portman's bio, in this edition, her mention exploring the link between seasons and signs and how it cannot be applied in Australia. I think, as Southern Hemisphere astrologers, it is incredibly important for us to explore these definitions and meanings. Does the December-January season tell us something about Capricorn, or not?

In an Astro Mundi master class I attended, an astute student pointed out that if Saturn and Capricorn indicate restriction then it fits our summer, especially in Adelaide; the season where the grass turns brown and things wither. Our winters, on the other hand, are lush and green, bringing growth and fertility.

Whatever your exploration or experience of this season has been, I hope you are well and happy. And I am looking forward to seeing everyone at our first meeting, February 11, with three very experienced astrologers.

Joel Valentine

editor@faasa.com.au

Southern Star

Editor: Joel Valentine
Email: editor@faasa.com.au
Phone: 0429 231 390
Internet: www.faasa.com.au

Submissions: All articles and advertisements are to be submitted in word format (preferred) to the Editor via email by the **12th day of each month**.

Disclaimer: The Editor reserves the right to edit or refuse submissions to the newsletter. The opinions expressed herein do not necessarily reflect the opinion of the Federation of Australian

FAASA Committee

President
Cate Whelan
08 8557 7417
president@faasa.com.au

Vice President
Kris Svendsen
0424 682302
vicepresident@faasa.com.au

Treasurer
Judy Best
0415 781 280
treasurer@faasa.com.au

Astrologers or the Southern Star Editor

© Southern Star, FAA SA Inc 2017. All rights reserved.

FAASA Membership Fees

(per calendar year)

Full - \$75

Concession* - \$55

Joint Full - \$105

Joint Concession* - \$80

Newsletter Only - \$35

*Concession cards need to be sighted by the Treasurer when paying membership subs. Only pension cards and healthcare cards issued by Centrelink are deemed Concession.

Secretary

Currently vacant

secretary@faasa.com.au

National Councillors

Cate Whelan

08 8557 7417

president@faasa.com.au

Joel Valentine

0429 231 390

joalybird@gmail.com

Members

Anne Hamilton

08 8523 5235

hamilton.a26@gmail.com

Joel Valentine

0429 231 390

joalybird@gmail.com

Bev Malin

bevmalin@internode.on.net

Newsletter Editor

Joel Valentine

0429 231 390

editor@faasa.com.au



Copyright © 2017 Federation of Australian Astrologers, South Australia, All rights reserved.

Want to change how you receive these emails?

You can [update your preferences](#) or [unsubscribe from this list](#)

MailChimp