



Sagittarius 2016 edition:

Introduction to Evolutionary Astrology
Xmas Heat: Does the forecast match the astrology?
Change to FAASA dates in 2017

From the President

Just a short note to wish all our members a very happy Christmas and holiday season. May the New Year bring you opportunities, challenges, strength, courage, lots of laughter and much happiness.

To add to your joy, I remind you that your membership ends on 31 December and your membership fees are due! Rates have increased by \$5 per year. So, hopefully it won't hurt your pocket, but it certainly helps the Association.

New fees are \$75 full membership, \$55 concession, joint membership \$105, joint concession \$80.

I hope to see you at our meetings next year. **Due to room booking constraints, most meetings will be on the second Saturday of the month in 2017.** So, reset your internal clock. We have a great program of speakers and topics lined up for you! We are looking forward to another great year.

May Christmas bring you joy and light

Cate Whelan

president@faasa.com.au



Transits to watch

Sun enters **Capricorn** - Dec 21
Saturn trine **Uranus** - Dec 24
Jupiter opposition **Uranus** - Dec 26
Uranus Direct - Dec 29
New Moon 7 **Capricorn** 59 - Dec 29
Mars conjunct **Neptune** - Jan 1
Sun conjunct **Pluto** - Jan 7
Sun square **Uranus** - Jan 10
Mars square **Saturn** - Jan 19



Time to Evolve: Introduction to Evolutionary Astrology, Part I

With Viven Lowe

This article is an introduction to Evolutionary Astrology, and is the first in a series that will explore this fascinating technique. Our exploration will center on the interpretation of the chart of Winston Churchill.

Steven Forrest and the Jeffrey Wolf Green school of Evolutionary Astrology represent the latest in a long line of astrologers who have explored the birth chart, looking for clues about an individual's spiritual development, and the lessons to be learned in this lifetime. My studies to date have been with Steven Forrest. This series of articles will focus on his method, which Steven describes as the 'chart behind the chart'. Steven has always emphasised that the

following analysis can only follow a full chart interpretation using your usual methods. He has written several books, with *Yesterday's Sky* a good introduction to his work.

A major concern about this technique is that a story is developed from the astrological symbolism with no way to know if it is accurate. In fact, Steven admits that an accurate story is not necessary and that the chart cannot give us specific, verifiable past-life facts.

Nodal analysis is, therefore, is a metaphor for the actual past life realities, and the story does not have to be 'factual' for it to be 'true' psychologically.

This is similar in some ways to the concept of the 'Slothwoman' in Dianic Wicca, developed by [Z Budapest](#) and [Starhawk](#). In this conceptualisation, the term 'Slothwoman' is used to describe the part of our brain that is purely emotional, cannot be reasoned with, but responds powerfully to story and ritual. They believe that most ritual works at this level, and that this is why it has such a profound effect.

Science locates this emotional brain in the limbic system, which in many ways acts as the seat of our personal unconscious. This is a very old part of the brain that is involved in the 'fight or flight' response, and is where our emotional responses originate. Part of the limbic system, the hippocampus, is involved in the formation of memories, and has been implicated in the flashbacks associated with PTSD. Please see suggested web sites below for more information on the limbic system.

The Technique

No single birth chart can represent all past lives. The client's current chart therefore describes issues from prior lifetimes that were left unresolved and are relevant to the present life. As with all forms of astrology, there needs to be some technique; some order in which to read the chart that gives us a clear understanding. The Moon's nodes are central to Steven Forrest's technique, and are the starting point that allows us to integrate all other parts of the chart.

Mean Node or True Node?

Steven Forrest uses the **mean node** in his work. Following [Melanie Reinhart's](#) FAASA workshop, I use the **true node**. As you can see by looking at a graphic ephemeris, the true node has a serpentine movement that seems, to me, to be more appropriate. The mean node, on the other-hand, is represented as a straight line.

In Winston Churchill's chart, the **mean node** is **24 Aries 22** while the **true node** is **25 Aries 51**. A difference of about one and a half degrees. We will watch both nodes while interpreting

the chart and see if there are any significant differences.

Winston Churchill

Churchill's chart has a Rodden rating of A and can be found on the Solar Fire database. The birth data is:

November 30th 1874

1:30am GMT (+0:00)

Woodstock, England

51N52, 001W21

Ascendant 29Virgo56, MC29Gemini54

Placidus



References

Although the initial interpretation will use [Steven Forrest's](#) technique there are other excellent astrologers developing and using their own approaches. For example:

[The Jeffrey Wolf Green School of Evolutionary Astrology](#)

[Laura Nalbandian](#) (who gave an excellent workshop at the 2014 FAA conference in Hobart)

[Mark Jones](#) (who gave several great talks at the 2016 FAA conference in Sydney)

More information on the Limbic System can be found at:

https://en.wikipedia.org/wiki/Limbic_system

<https://www.ncbi.nlm.nih.gov/pmc/articles/PMC2917081/>

Vivien Lowe has been studying various forms of Astrology since 1978 and still goes to classes at Astro Mundi whenever possible. A born student, she is currently focussing on research, particularly Evolutionary Astrology, and the newer objects in the Kuiper belt and beyond.



Jupiter and Jesus

Were there astrologers at the birth of Jesus? [Listen to Chris Brennan and Vedic astrologer Kenneth Miller](#) discuss the possible astrological alignments that produced the Star of Bethlehem.



That Time of Year

Yes, time to think about your membership fees for 2017! We've raised them just a tiny bit... an extra \$5 a year, so hopefully it won't be a problem for you but it will certainly help us. Thank you to everyone who has supported us this year - we would not have an



Meeting change

Our meeting dates are a little different this year. But we know you won't want to miss out on the speakers we have for you. So, make a note of the below.

FAASA Meeting dates for 2017:

Feb 11
March 18
April 8 - all day workshop
May 6
June 10
July 1 - all day workshop
August 12
Sep 9
Oct 14
Nov 11
Nov 25

association without you!

New fees are:

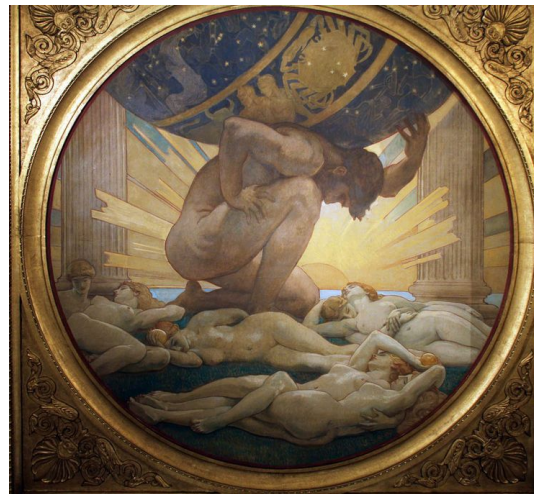
\$75 full membership

\$55 concession

\$105 joint membership

\$80 joint concession

You can pay by Direct Deposit to ANZ bank, BSB 015 367 Account Number: 499070824 (with email to treasurer@faasa.com.au), or send a cheque made out to FAASA Inc to Treasurer, PO Box 7443, Hutt St Adelaide 5000.



Where's good?

Thinking of going somewhere? Astrolocality can be complicated, but [Astrodienst have a playful map](#) to find out where in the world reflects the best parts of your chart.

Day 1 Evolutionary Astrology
 Mercurial Connections – **Sat Feb 25**
 Day 2 Lunar Saros Workshop
 Murray Beauchamp – **Sun Feb 26**

FOR DETAILS &
 REGISTRATION:

Lisa

0412013744

Christine

0417043726



MERCURIALCONNECTIONS.COM.AU

\$110 1 day

\$200 2 days

Book now!

Lisa and Christine - Mercurial Connections

An Introduction to Evolutionary Astrology

This 1 day workshop will have you looking at the chart through the eyes of Evolutionary Astrology, with the focus on the lunar nodes, based on the teachings of Steven Forrest. These fundamental elements will come to life in a new light as we look to incorporate profound yet simple ways to deepen your understanding of the souls evolving journey. These techniques lead to a greater wisdom and understanding through self awareness of our life path. We will be presenting charts as well as working on charts of participants as real life examples of this rich form of astrology

Murray Beauchamp - Lunar Saros Workshop

This latest workshop continues to develop our understanding of our pre natal eclipse and its relationship to the Saros, a relationship representing the possibilities that exist when our soul touches energy from another level. Entering this relationship opens us to a further understanding of our life journey. Our pre natal eclipse connects us to a lunar Saros series, a series of eclipses with a beginning and end, Saros is relevant to our life.

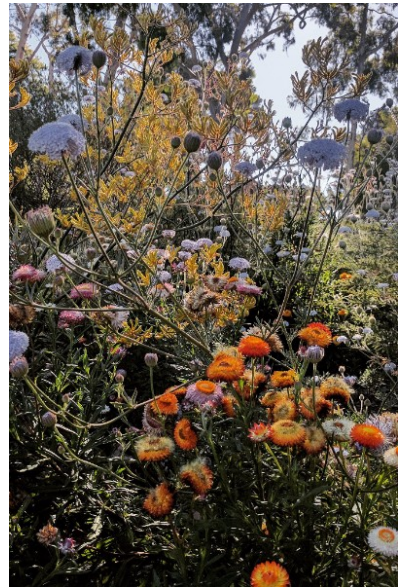
Where: New TS Bookshop.

310 South Terrace, ADELAIDE S.A

When: Sat 25th & Sun 26th Feb'17

Will it be a warm
 Christmas?

Let's ask Mercury



A local group of novice weather astrologers have put together a Christmas forecast for you. Don't tell the bureau!

The meteorological forecast for Christmas is hot in the extreme! But do the planets agree? Astro-meteorology is as old as many other kinds of astrology, and the principles are in some ways similar.

The first step is to look at the ingress chart for the season. At this time of year the closest cardinal ingress is Capricorn, which always occurs just before Christmas.

In astro-meteorology, we look to the 4th house and its ruler, and any planets within that house, for the bulk of the information about whether the weather will be pleasant during that ingress. We can then narrow down when this weather might occur using lunation charts.

Capricorn Ingress 2016

Natal - Chart

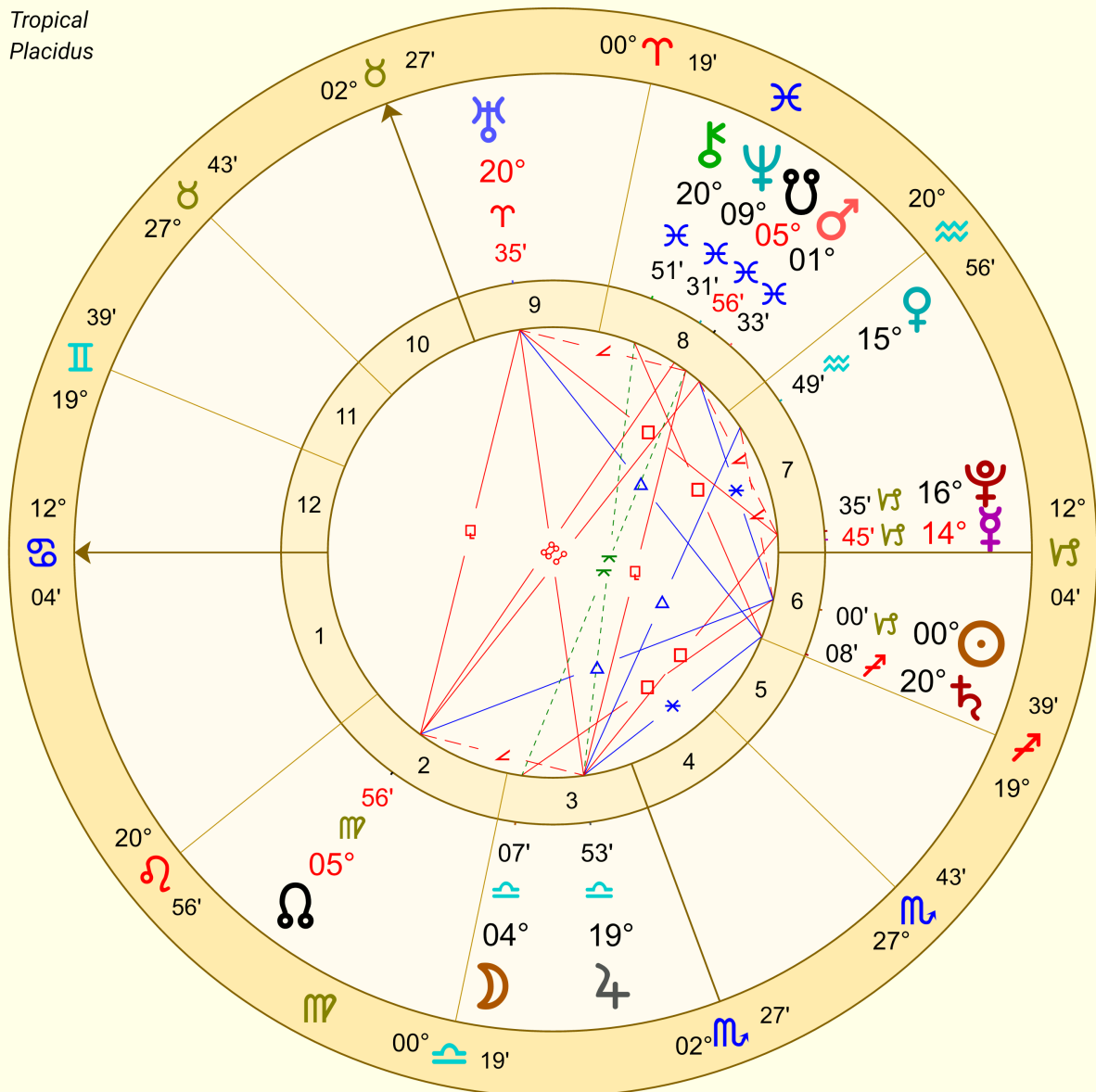
21 Dec 2016

9:15 PM ACDT -10:30

Adelaide, Australia

Tropical

Placidus



Capricorn Ingress 2016

In this case, we have Scorpio on the 4th house cusp, with Mars ruling from Pisces. Mars is a hot and dry planet, and will almost certainly bring weather along those lines. As it is Scorpio on the 4th house cusp, it adds an element of 'extremes'. Mars, though, may be tempered by its placement in Pisces; typically cool and mild, and even wet. George L. McCormack says that Mars in water signs is conducive to brief storms. But what does the rest of the ingress chart say?

Cancer is Ascending, and again associated with cool, wet conditions. We find its ruler, the Moon, in Libra, though; again, cool and lower temperatures, but generally pleasant.

There aren't any planets in strong aspect to Mars and the Moon, but we do find retrograde Mercury conjunct Pluto on the Descendant. Mercury has a strong association with winds, and Pluto adds to the 'extreme' element. Mercury is also associated with neutrality, until it finds someone to copy; in this case, troublesome Pluto. Capricorn tends to coolness, but can add to heat in summer; anything that is long and harsh. We should also mention that Mars is conjunct the South Node, generally seen as a malefic force.

All of these associations must be taken in the context of the season. It is summer in Australia, and therefore it will tend to warmth. But with the water signs present in the ingress, we may see more moisture than anticipated. Scorpio on the IC, and Retrograde Mercury conjunct Pluto on the Descendant may indicate more unexpected, extreme, and intense weather events.

So, what does the lunation prior to Christmas day look like?

Last Quarter Luration

Natal - Chart

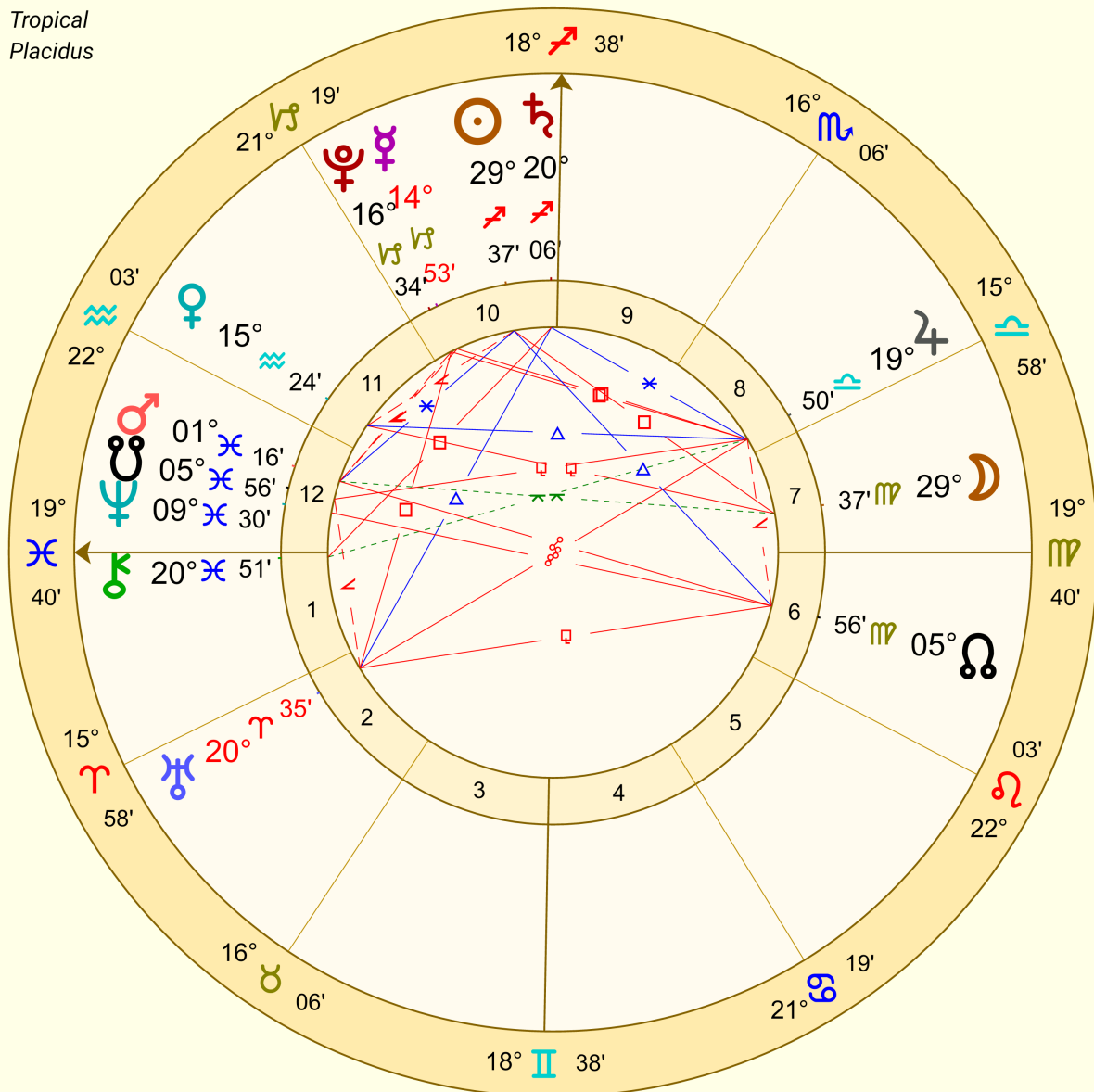
21 Dec 2016

12:26 PM ACDT -10:30

Adelaide, Australia

Tropical

Placidus



Interestingly, the last lunation before Christmas day occurs just before the Capricorn ingress. And here we see some repetitions from the cardinal ingress chart.

It is a mutable cross chart with Mercury and Jupiter ruling the angles. Gemini on the IC tends to cool, dry, open skies and moving clouds, with fluctuations in temperature.

Mercury, as stated above, is in Capricorn, retrograde,

conjunct Pluto, and may add to a harsher, or more turbulent weather pattern during this lunation.

The other stand-out element of the lunation chart is Saturn's placement right on the MC. It is always important to watch the angles in weather charts, as they indicate action. Saturn tends to gloom and low pressure systems, but it is summer, remember, and Saturn is in Jupiter's sign and in mutual reception.

Jupiter rules the MC, is in square to Mercury, but in the pleasant sign of Libra. William Ramesey says that difficult aspects between Mercury and Jupiter can indicate 'great and vehement winds'. And Saturn conjunct the Sun 'in summer much rain, thunder, and lightning.'

A difference of opinion

While the weather bureau is predicting an out-and-out scorcher for South Australia's Christmas day, part of forecasting in astro-meteorology includes watching the Moon's passage over the angles of the ingress; this generally indicates a change in weather.

Early on the morning of Christmas eve, the Moon will pass over the IC of the ingress chart. Around 6pm on Christmas day, retrograde Mercury will slowly make its way over the descendant.

According to the bureau, there will be some storms in the days after Christmas. But Bureau of Meteorology duty forecaster Domenic Panuccio told The Advertiser, "It does depend on a few different factors as to whether it gets that hot [on Christmas day]."

"There's warm air mass coming over the state with northerly winds dragging down to the Adelaide area (but) eventually winds will swing around to a southerly direction and bring a cooler air mass. The timing is uncertain being a week away."

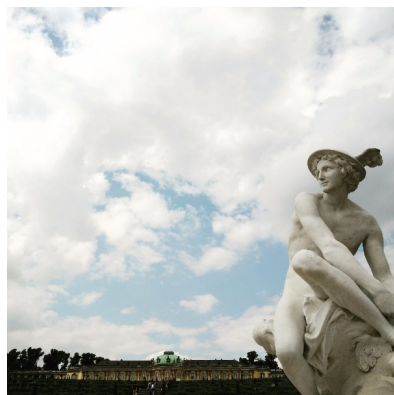
Could astrology bring a more precise prediction?

The planets may be indicating that a change in weather will occur earlier than indicated by the scientists. But we are just a novice group of astro-meteorologists, and by the time Christmas lunch is finished you may have forgotten this prediction altogether.

Whatever the weather, we wish you a safe and happy holiday!

References

'A text-book of Long-Range Weather Forecasting', George L. McCormack
'Astrologia Restaurata', William Ramesey



Interested in advertising in the Southern Star?

	Full Year	One Edition
1/8 page	\$60	\$10
1/4 page	\$100	\$15
1/2 page	\$185	\$30
Classified (4 lines)		\$10

From the Editor

I am delighted to be leaving 2016 and some of its events behind. I am also very happy to remember some of the excellent astrology that I saw occur in and around FAASA.

I must give a huge thank you to all those who contributed to the *Southern Star* in 2016. It couldn't have happened without you!

I am also very excited to see more excellent content next year; including a continuation of Vivien Lowe's introduction to Evolutionary Astrology. Vivien offered to contribute these articles after the positive reception her work received at FAASA meetings. Vivien is clearly an excellent researcher and astrologer, and I am really looking forward to following, and learning from, this series.

I will be travelling during the release of the next newsletter. So, hopefully Mercury retrograde will be well and truly over, and it arrives in your inbox without any trouble.

Best wishes to all readers. See you in 2017!

Joel Valentine

editor@faasa.com.au

Southern Star

Editor: Joel Valentine
Email: editor@faasa.com.au
Phone: 0429 231 390
Internet: www.faasa.com.au

Submissions: All articles and advertisements are to be submitted in word format (preferred) to the Editor via email by the **12th day of each**

FAASA Committee

President
Cate Whelan
08 8557 7417
president@faasa.com.au

Vice President
Kris Svendsen
0424 682302

month.

Disclaimer: The Editor reserves the right to edit or refuse submissions to the newsletter. The opinions expressed herein do not necessarily reflect the opinion of the Federation of Australian Astrologers or the Southern Star Editor

© Southern Star, FAA SA Inc 2016. All rights reserved.

FAASA Membership Fees

(per calendar year)

Full - \$75

Concession* - \$55

Joint Full - \$105

Joint Concession* - \$80

Newsletter Only - \$30

*Concession cards need to be sighted by the Treasurer when paying membership subs. Only pension cards and healthcare cards issued by Centrelink are deemed Concession.

vicepresident@faasa.com.au

Treasurer

Judy Best

0415 781 280

treasurer@faasa.com.au

Secretary

Currently vacant

secretary@faasa.com.au

National Councillors

Cate Whelan

08 8557 7417

president@faasa.com.au

Joel Valentine

0429 231 390

joalybird@gmail.com

Members

Anne Hamilton

08 8523 5235

hamilton.a26@gmail.com

Joel Valentine

0429 231 390

joalybird@gmail.com

Bev Malin

bevmalin@internode.on.net

Newsletter Editor

Joel Valentine

0429 231 390

editor@faasa.com.au



Copyright © 2016 Federation of Australian Astrologers, South Australia, All rights reserved.

Want to change how you receive these emails?
You can [update your preferences](#) or [unsubscribe from this list](#)

MailChimp